

MUSCARAPES IN SEARCH OF A PLACE

CURATED BY PREMJISH ACHARI

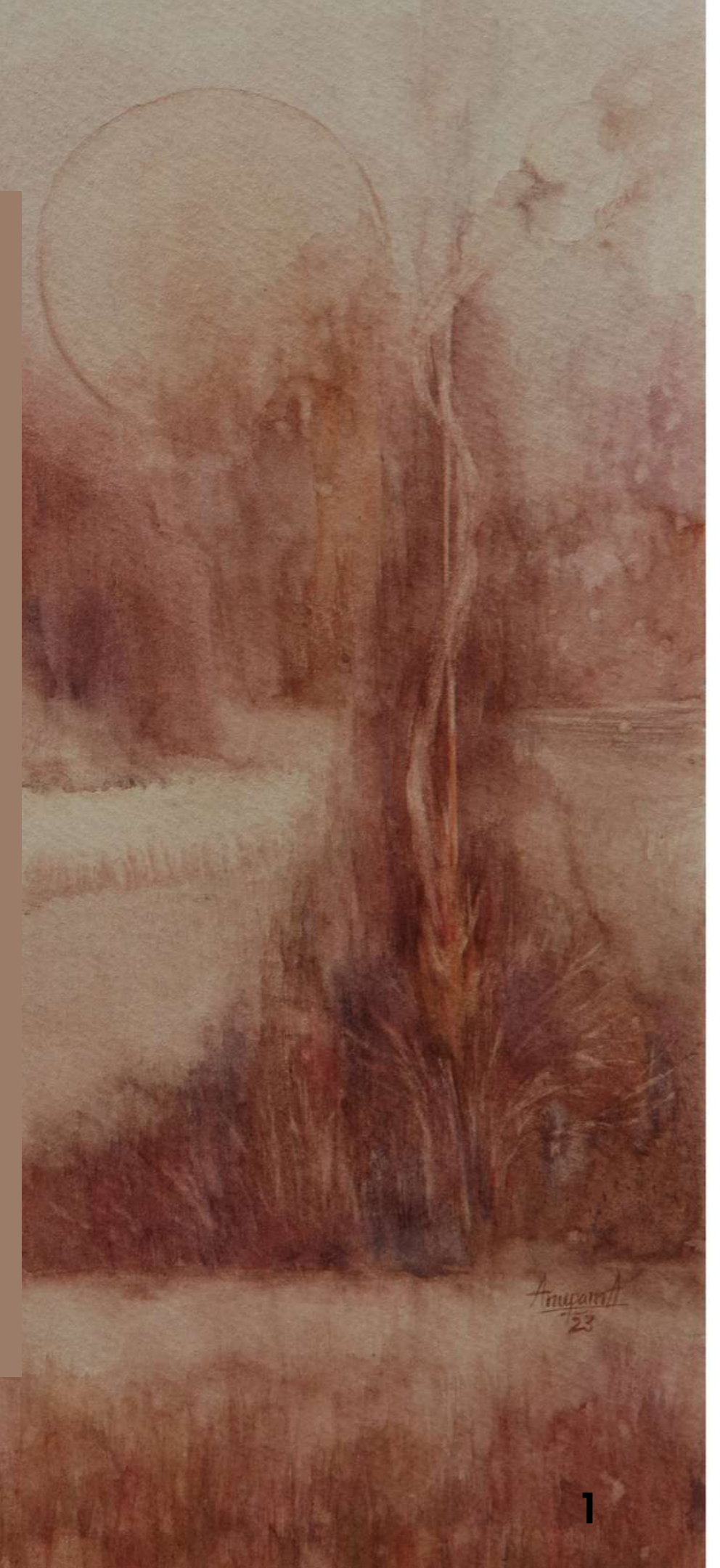
19-24 DEC'23

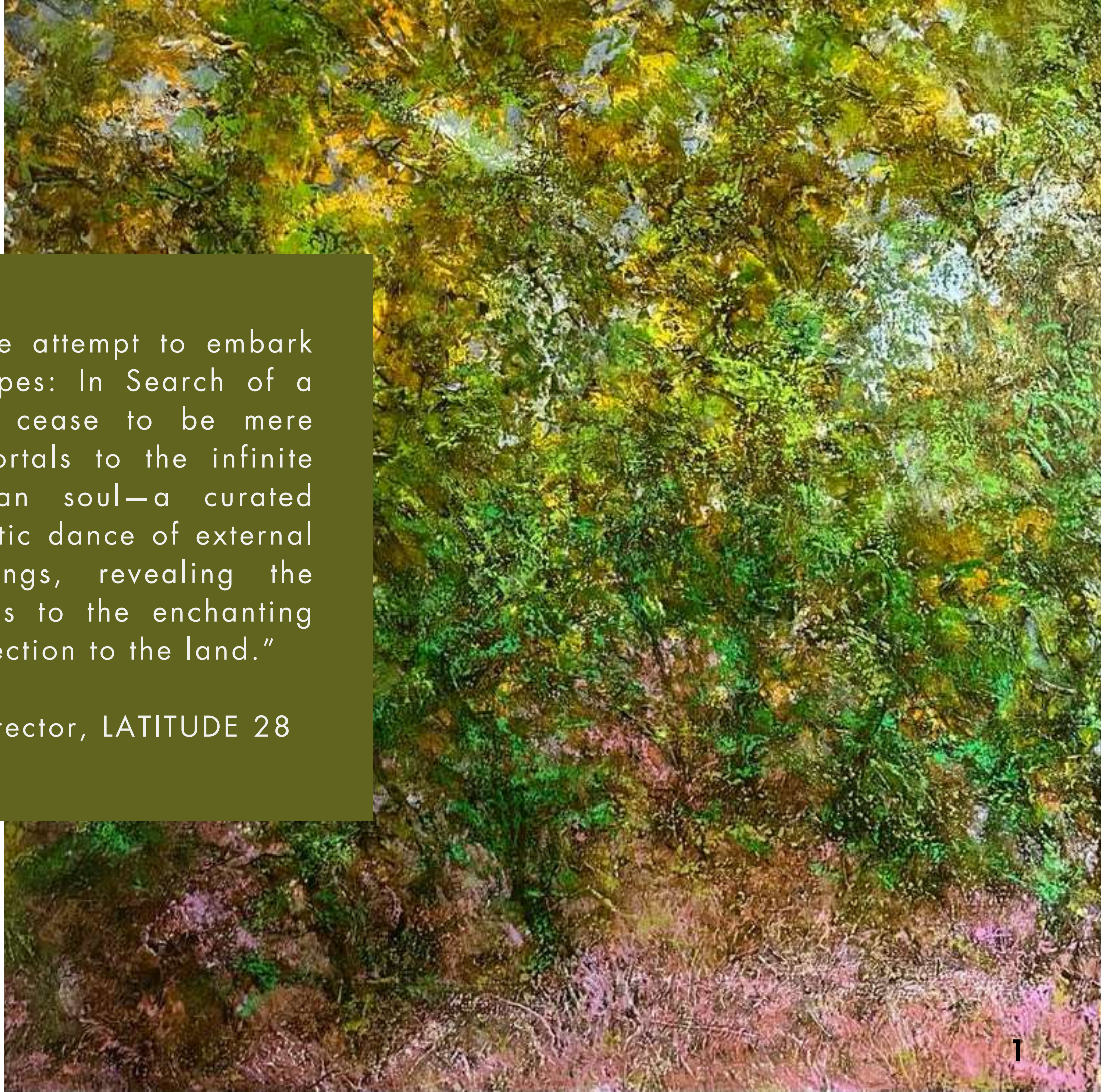
CCA, BIKANER HOUSE

LATITUDE 28

“Throughout history, landscapes have been an essential visual foundation for artistic practice. Its artistic presence across various cultures and periods has led to the emergence of landscape as a critical genre in art. Though used as an umbrella term or misunderstood as a monolithic practice, the diverse forms of artistic expression that engage with the surrounding space attest to the heterogeneity of this genre. This diversity of practices calls for a curatorial revisit to understand contemporary artistic engagement with landscape. We consider landscape to represent external reality; this exhibition correlates it as an expression of artistic interiority. The curatorial premise of inscape allows us to explore various artistic practices that engage with psychogeography, cultural rootedness, atmospheric pieces, and visual reconfiguring of the spaces. The idea is inspired by the classical Sangam poetic tradition, where the five ecozones/landscapes (tinai) were closely integrated with the emotional conditions of the characters.”

— Premjish Achari, Curator and Art Critic





“Through this exhibition we attempt to embark on an odyssey into 'Inscapes: In Search of a Place,' where landscapes cease to be mere backdrops and become portals to the infinite complexities of the human soul—a curated journey through the symbiotic dance of external vistas and internal musings, revealing the hidden stories that bind us to the enchanting mystery of our shared connection to the land.”

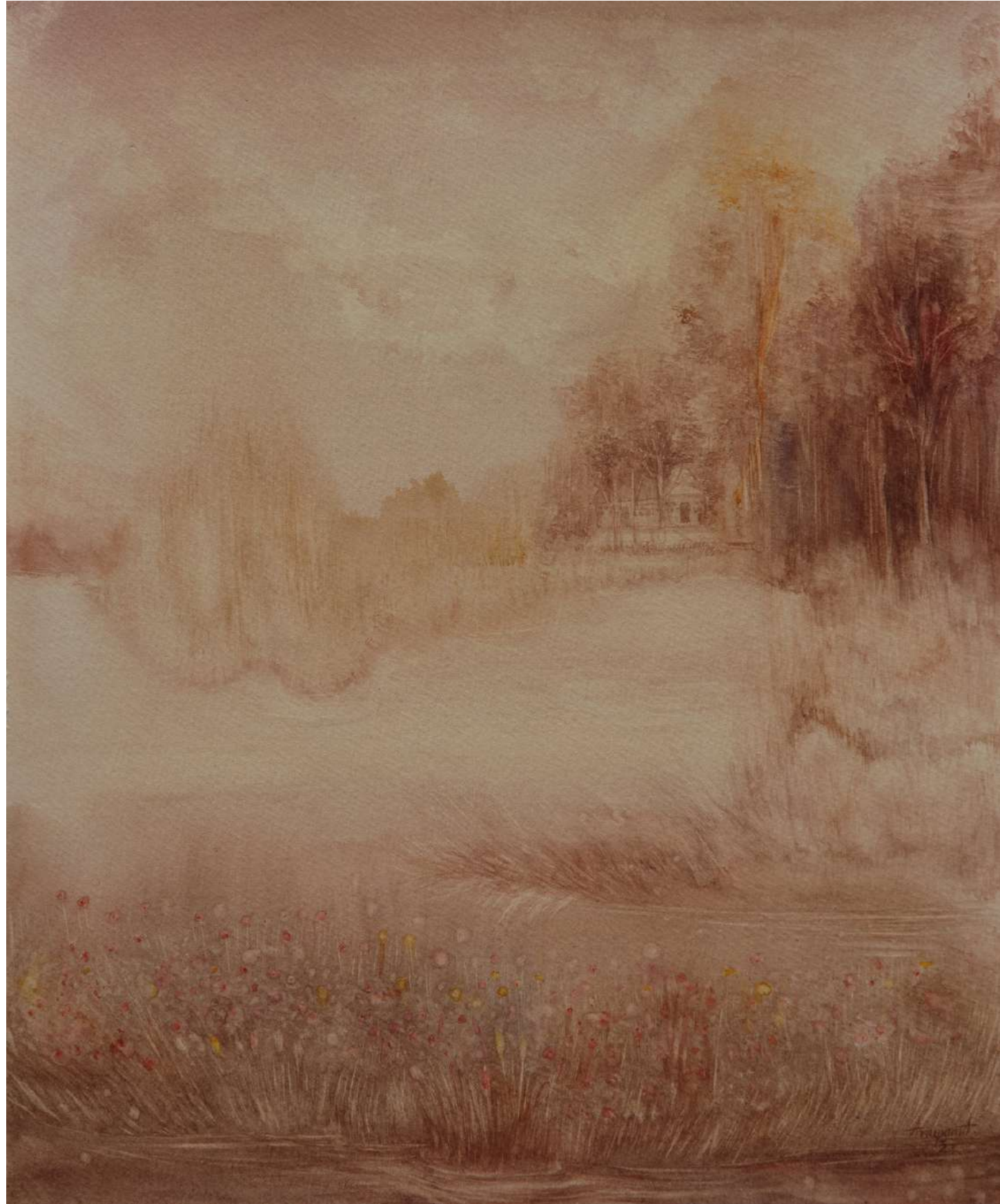
- Bhavna Kakar, Founder-Director, LATITUDE 28



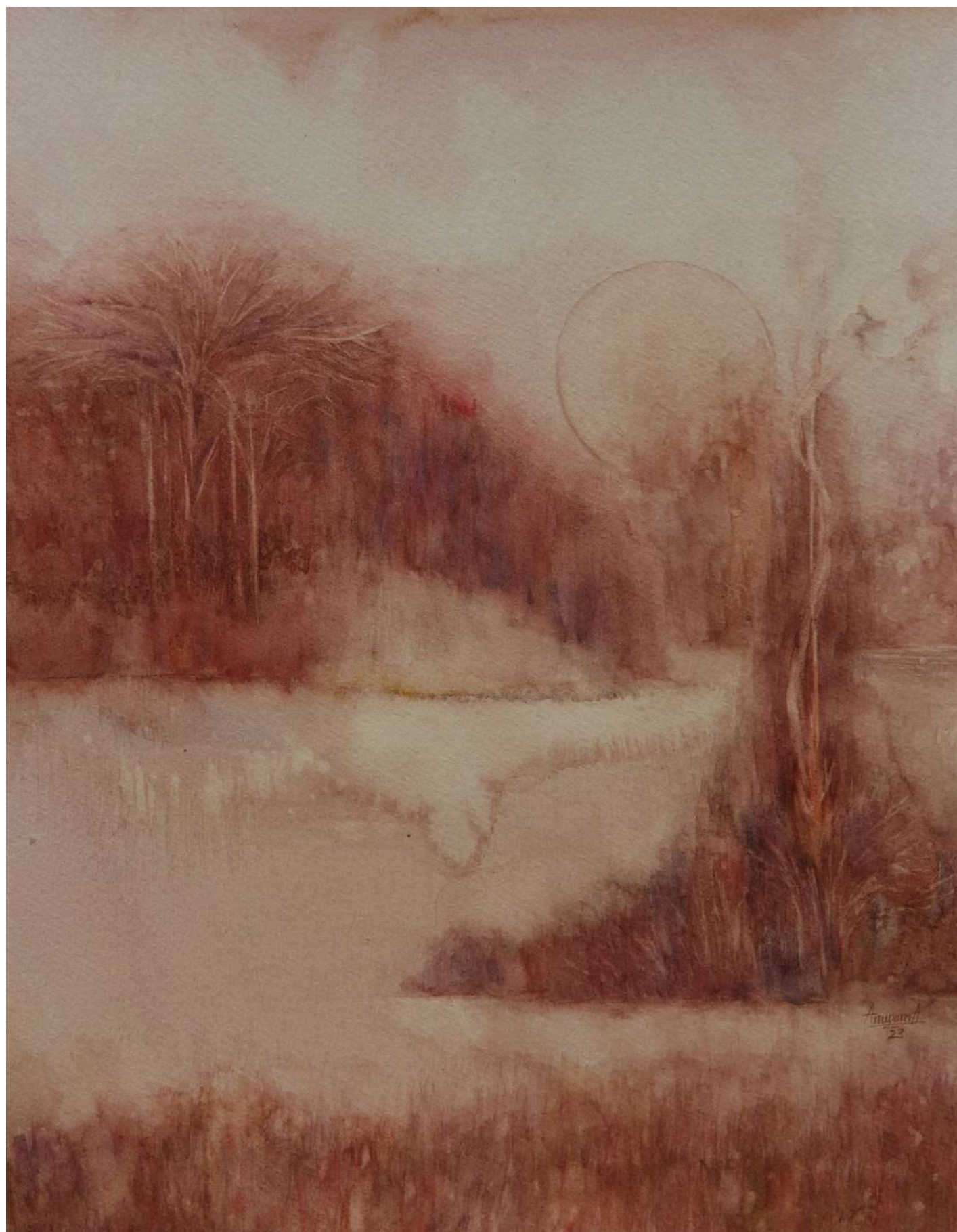
Installation, 'Inscapes: In Search of a Place' curated by Premjish Achari, presented by LATITUDE 28, CCA, Bikaner House, New Delhi, 2023



ANUPAMA ALIAS
Uncertain Realities
Watercolour on paper
11.42 x 9.06 inches
2023



ANUPAMA ALIAS
Uncertain Realities 2
Watercolour on paper
11.42 x 9.06 inches
2023



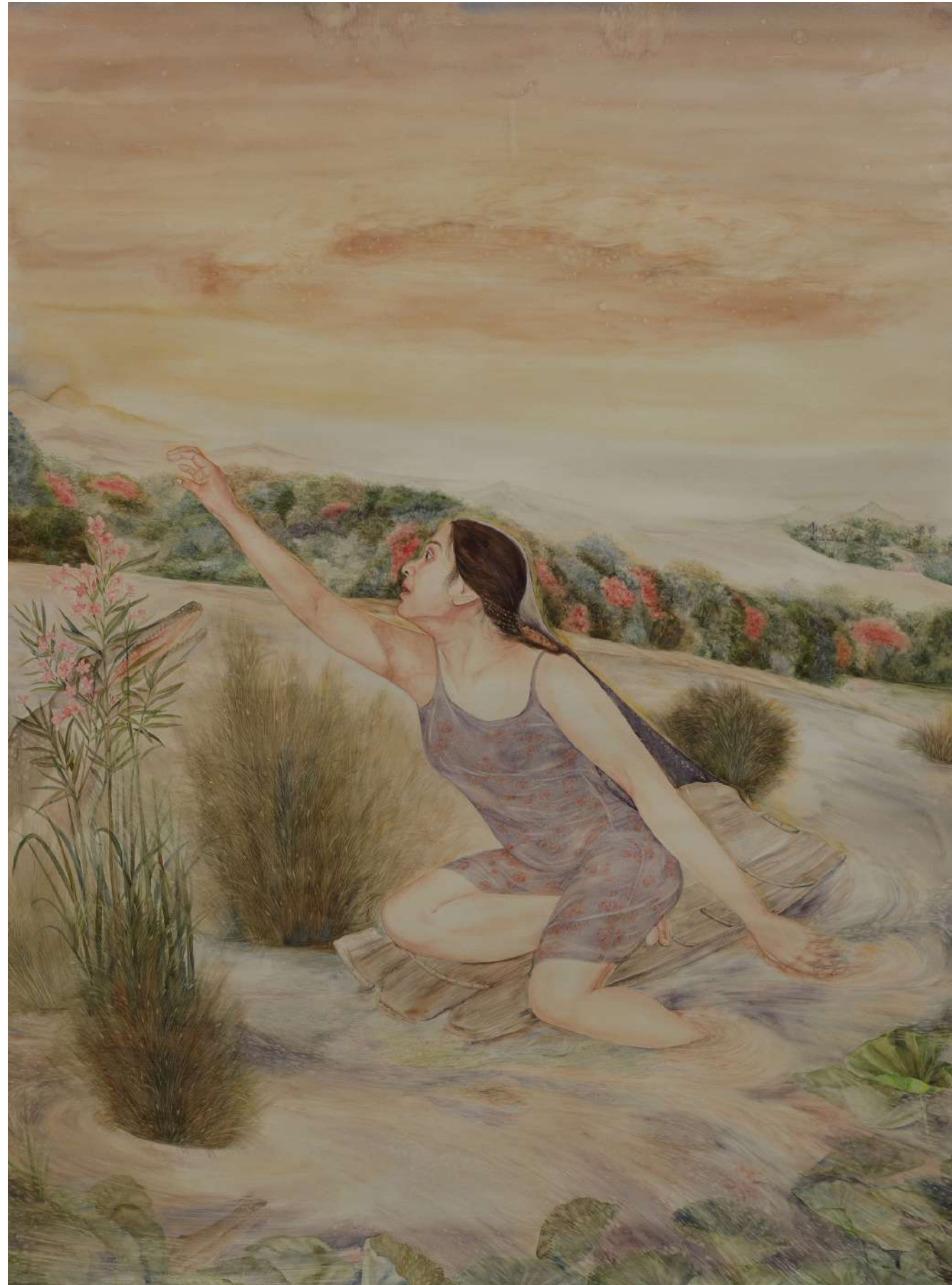
ANUPAMA ALIAS
Uncertain Realities 3
Watercolour on paper
11.42 x 9.06 inches
2023



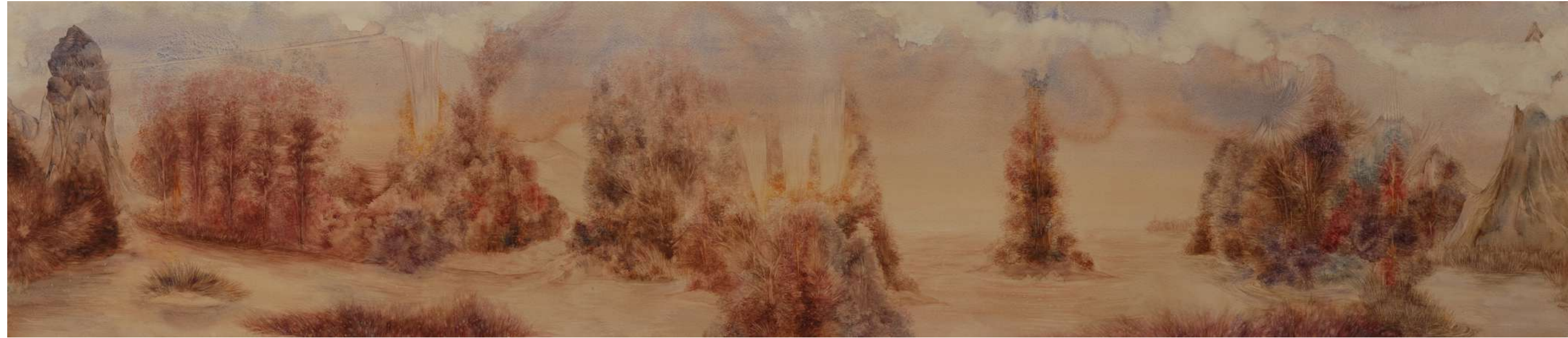
ANUPAMA ALIAS
Uncertain Realities 4
Watercolour on paper
11.42 x 9.06 inches
2023



ANUPAMA ALIAS
Uncertain Realities 5
Watercolour on paper
11.42 x 9.06 inches
2023



ANUPAMA ALIAS
Uncertain Realities 6
Watercolour on paper
59 x 43.5 inches
2023



ANUPAMA ALIAS
Uncertain Realities 7
Watercolour on paper
65.75 x 15.35 inches
2023



ANUPAMA ALIAS
Uncertain Real-lities 8
Mixed Medium
65.75 x 15.35 inches
2023



ABHAY BHALLA
Looking for the Lost Note II
Print
Series of 6 images:
5 = 15 x 10 inches
1 = 5 x 7 inches



ABHAY BHALLA
Looking for the Lost Note II
Print
Series of 6 images:
5 = 15 x 10 inches



ABHAY BHALLA
Looking for the Lost Note II
Print
Series of 6 images:
15 x 10 inches



ABHAY BHALLA
Looking for the Lost Note II
Print
Series of 6 images:
15 x 10 inches



ABHAY BHALLA
Looking for the Lost Note II
Print
Series of 6 images:
15 x 10 inches



ABHAY BHALLA
Looking for the Lost Note II
Print
Series of 6 images:
15 x 10 inches



ABHAY BHALLA
Looking for the Lost Note II
Print
Series of 6 images:
5 x 7 inches



ABHAY BHALLA
Until It is Revealed
Print
24 x 18 inches
Edition of 5
Series of two images



ABHAY BHALLA
Until It is Revealed
Print
24 x 18 inches
Edition of 5



ABHAY BHALLA
Until It is Revealed
Print
24 x 18 inches
Edition of 5



ABHAY BHALLA
Looking for the Lost Note I
Video
6 minutes



ANINDA SINGH
Seed of Remembering 1
Stoneware Clay, Found Glass,
Oxide Slips, engobes and glazes multiple firings
15 x 13 x 11 inches



ANINDA SINGH
Seed of Remembering 2
Stoneware Clay, Found Glass,
Oxide Slips, engobes and glazes multiple firings
17 x 9 x 8 inches



ANINDA SINGH

Lost in Folds 1

Stoneware Clay, Found Glass,

Oxide Slips, engobes and glazes multiple firings

15 x 13 x 5 inches



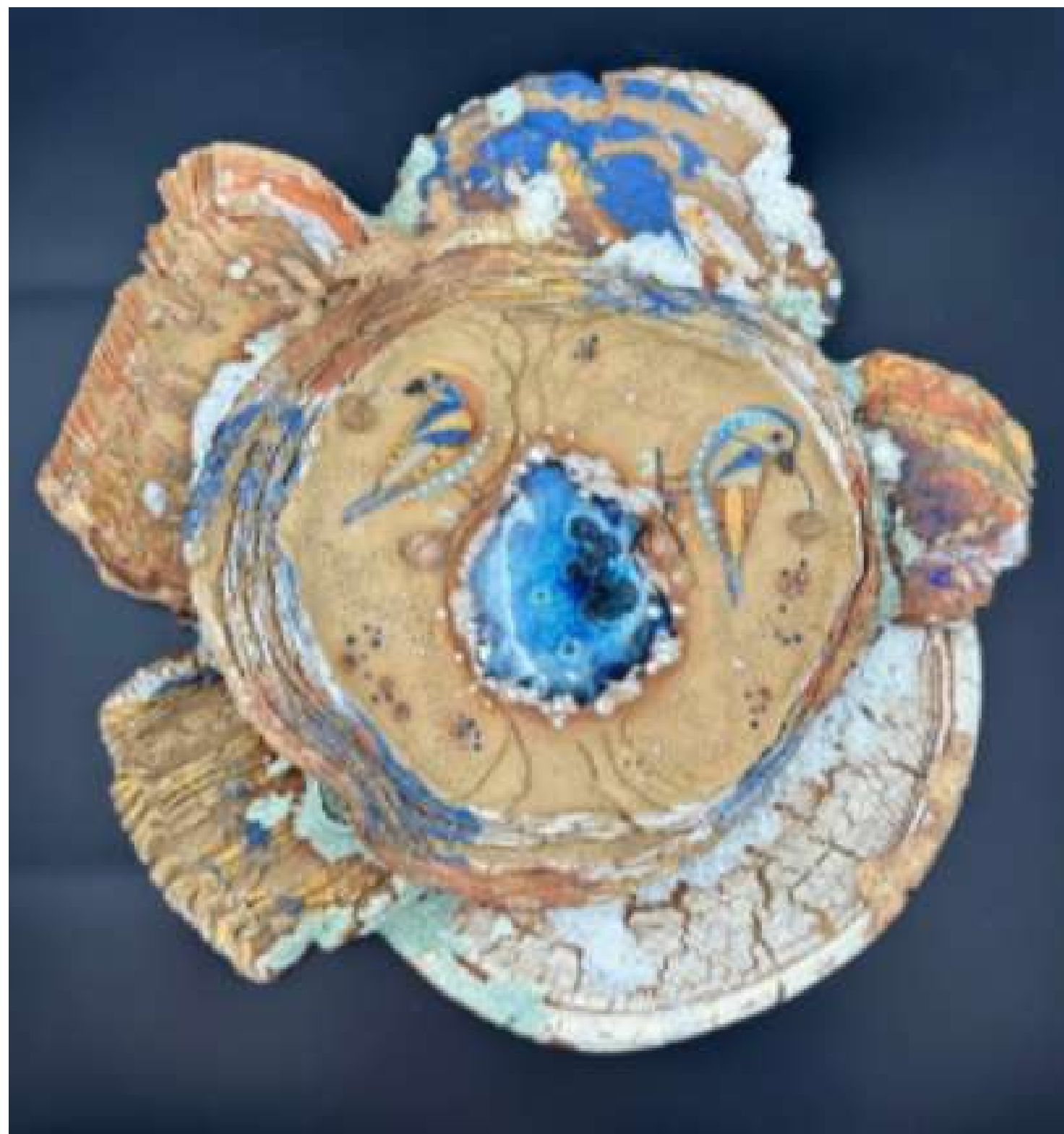
ANINDA SINGH

Lost in Folds 2

Stoneware Clay, Found Glass,

Oxide Slips, engobes and glazes multiple firings

15 x 14 x 4 inches



ANINDA SINGH

Lost in Folds 3

Stoneware Clay, Found Glass,

Oxide Slips, engobes and glazes multiple firings

15 x 14 x 3 inches



ANINDA SINGH

Lost in Folds 4

Stoneware Clay, Found Glass,

Oxide Slips, engobes and glazes multiple firings

13 x 12 x 4 inches



ARINDAM MANNA

Untitled

Drawings on previously taken
impression of falling leaves

6 Drawings - 12 x 8.5 inches |

2 Drawings - 30 x 21.6 inches



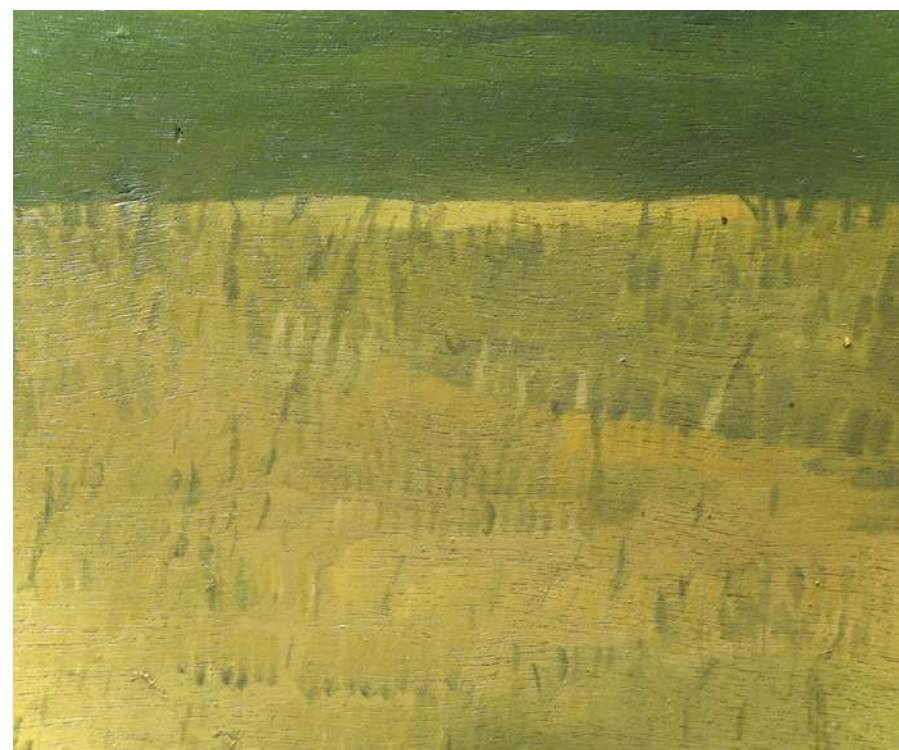
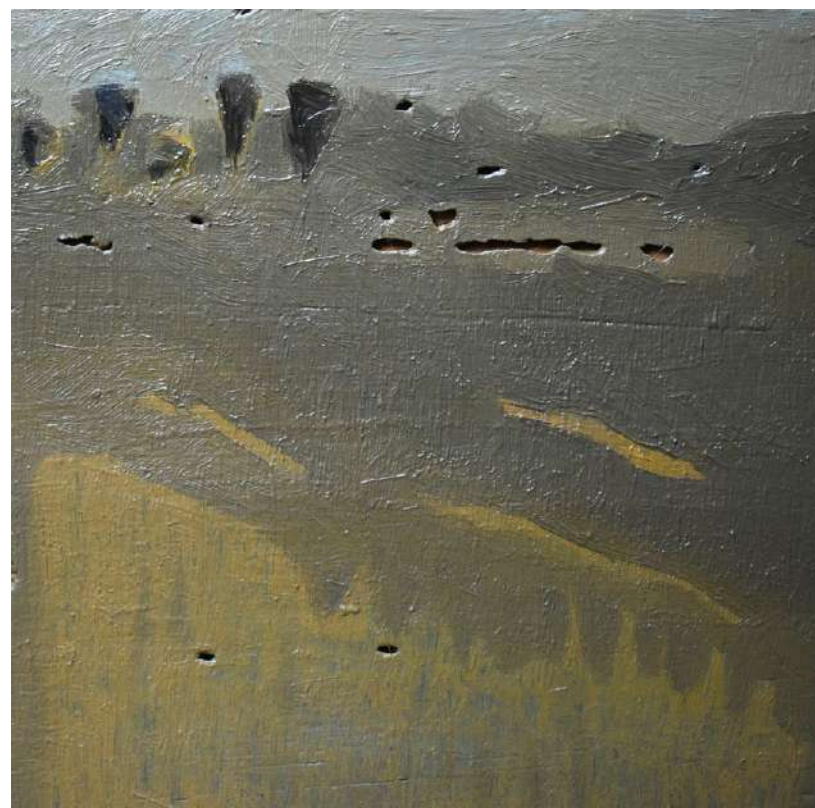
ARINDAM MANNA

Untitled

Graphite Drawings on Termite Paper

2 Drawings - 38.4 x 24 inches

1 Drawing - 12 inches X 8.5 inches



ARINDAM MANNA

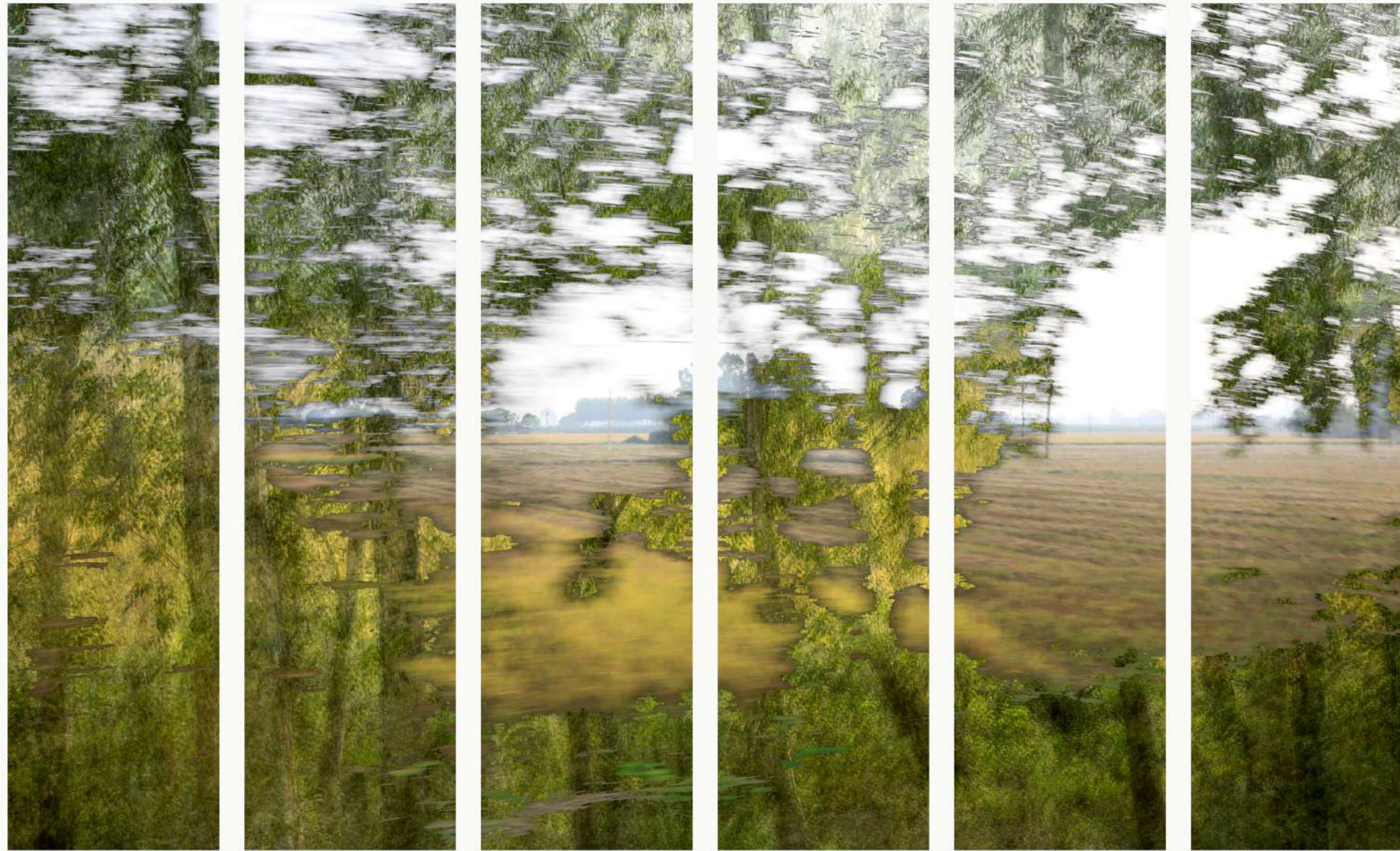
Untitled

Oil paint on wood

5 x 5 inches | 10 x 6 inches |

10.5 x 9 inches | 4.5 x 4.5

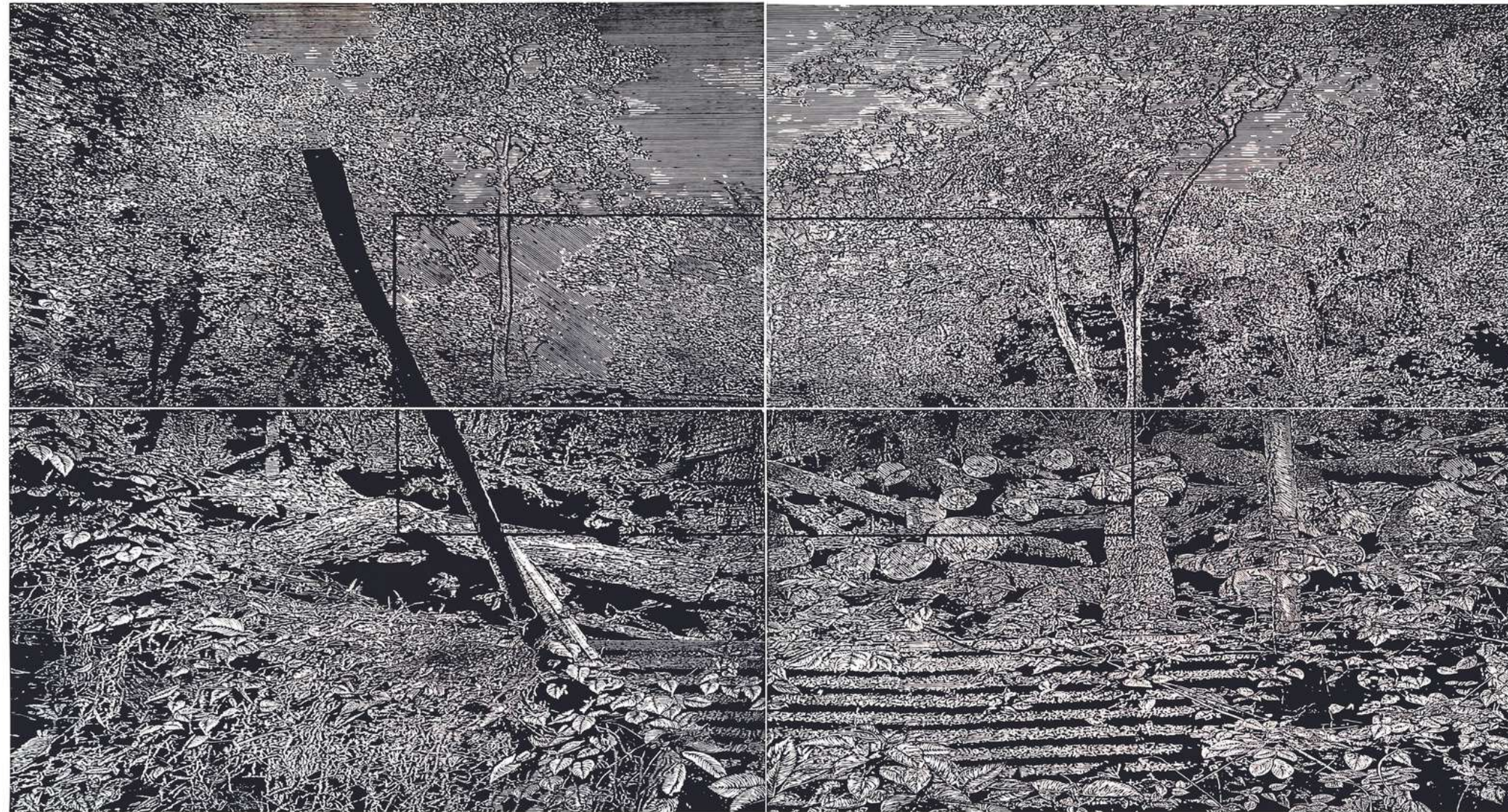
inches



ATUL BHALLA
Anhedonic Threshold
Archival Pigment Print
84 x 144 inches
(24 x 84 inches each set of 6)
2023
Edition of 3



BASIST KUMAR
Satori
Oil on linen
96.5 x 62.01 inches
2023



CHANDAN BEZ BARUAH
*Somewhere in the Northeast
India, Part III*
Woodcut
48 x 72 inches
2023



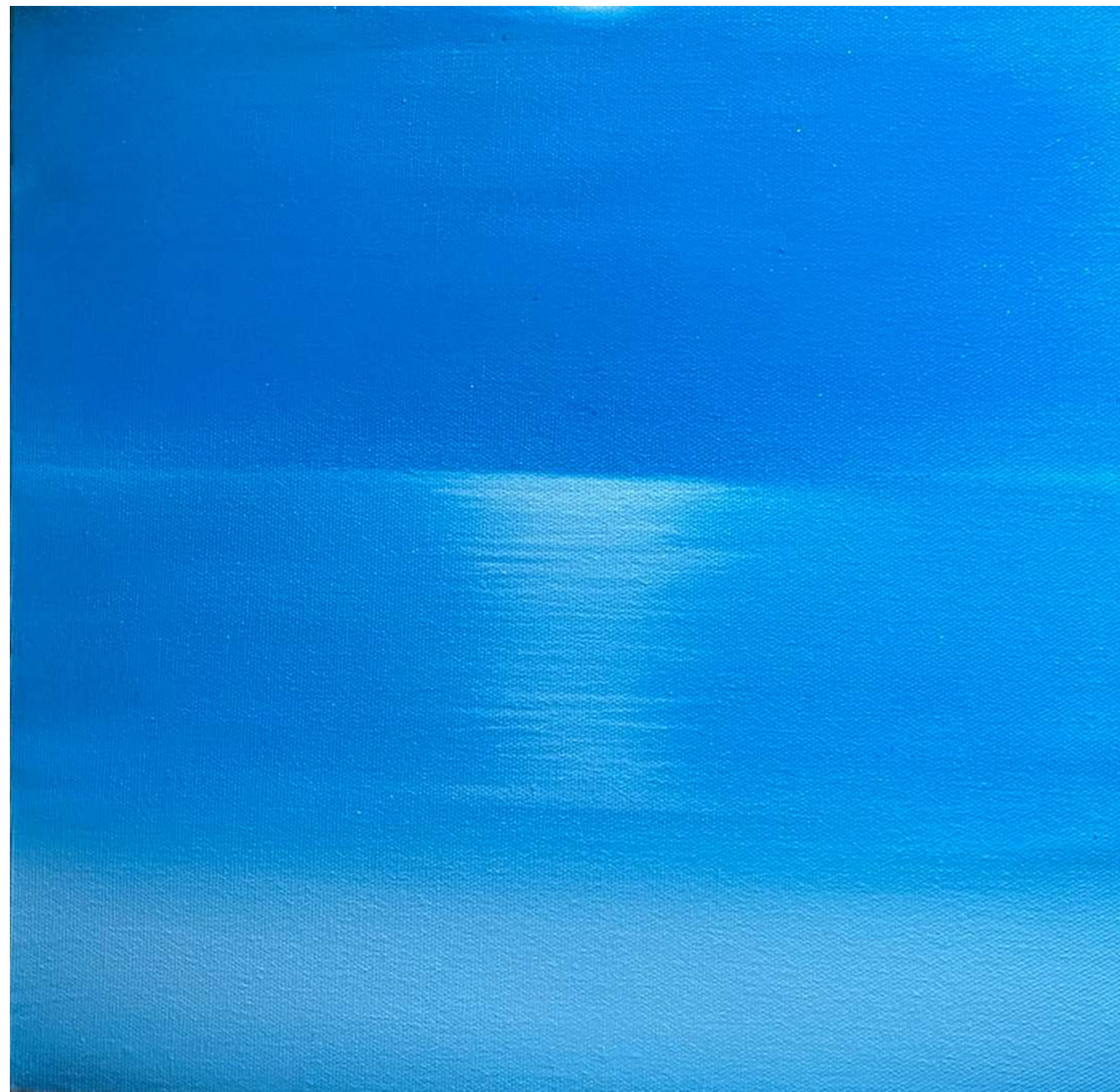
CHANDAN BEZ BARUAH
*Somewhere in the Northeast
India, Part III*
Woodcut
36 x 72 inches
2023



DIVYA SINGH
Time is a Flat Circle
Oil on canvas
60 x 60 inches
2023



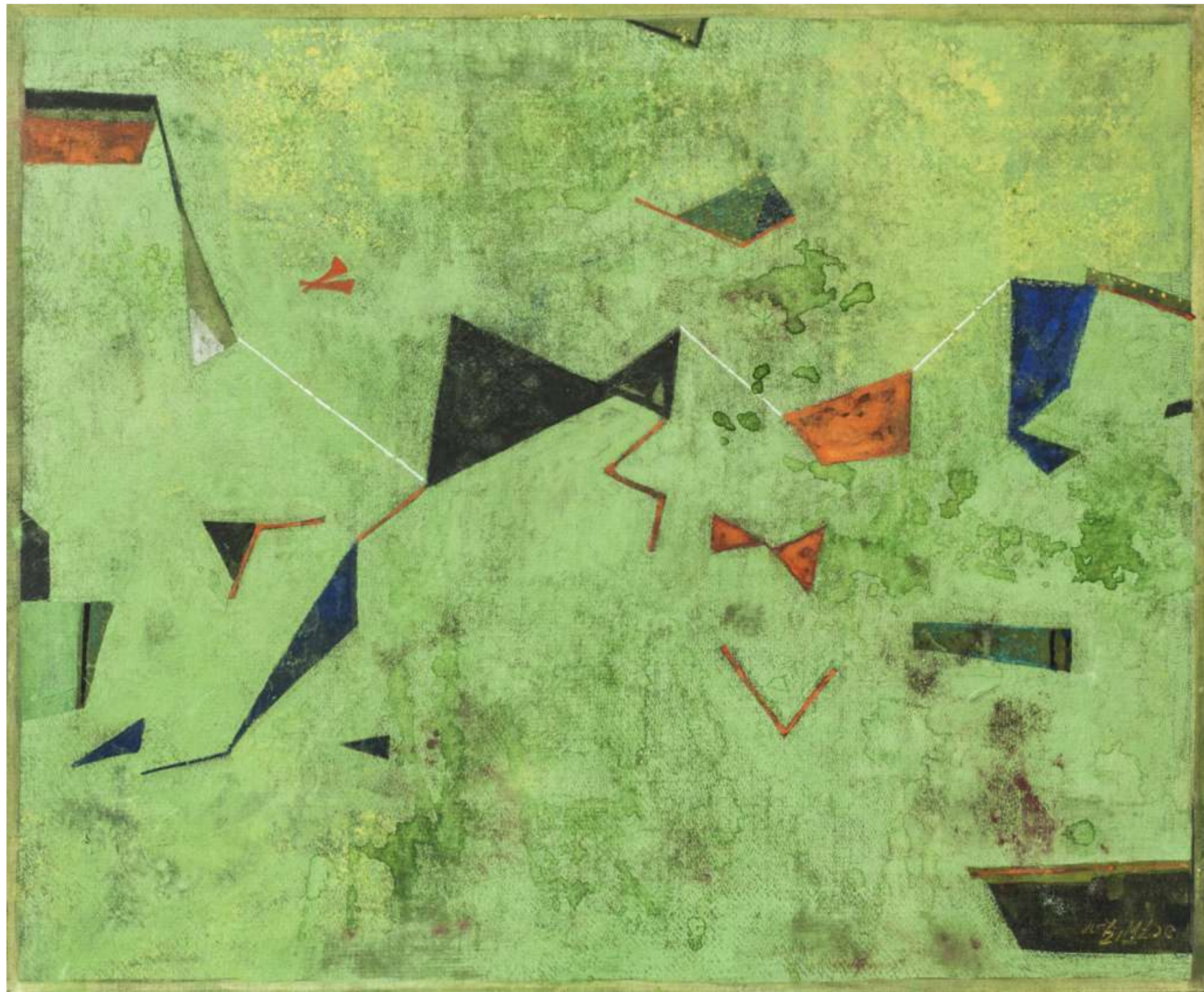
DIVYA SINGH
Weltschmerz and Sehnsucht
Oil on canvas
12 x 12 inches
2023



DIVYA SINGH
Strange Powers
Oil on canvas
12 x 12 inches
2023



Installation, 'Inscapes: In Search of a Place' curated by Premjish Achari, presented by LATITUDE 28, CCA, Bikaner House, New Delhi, 2023



GANESH HALOI

Untitled

Gouache on Nepali paper

pasted on board

18.5 x 25 inches

2015



GANESH HALOI

Untitled

Gouache on Nepali paper
pasted on board

18.5 x 26.75 inches

2014



G R IRANNA

Untitled

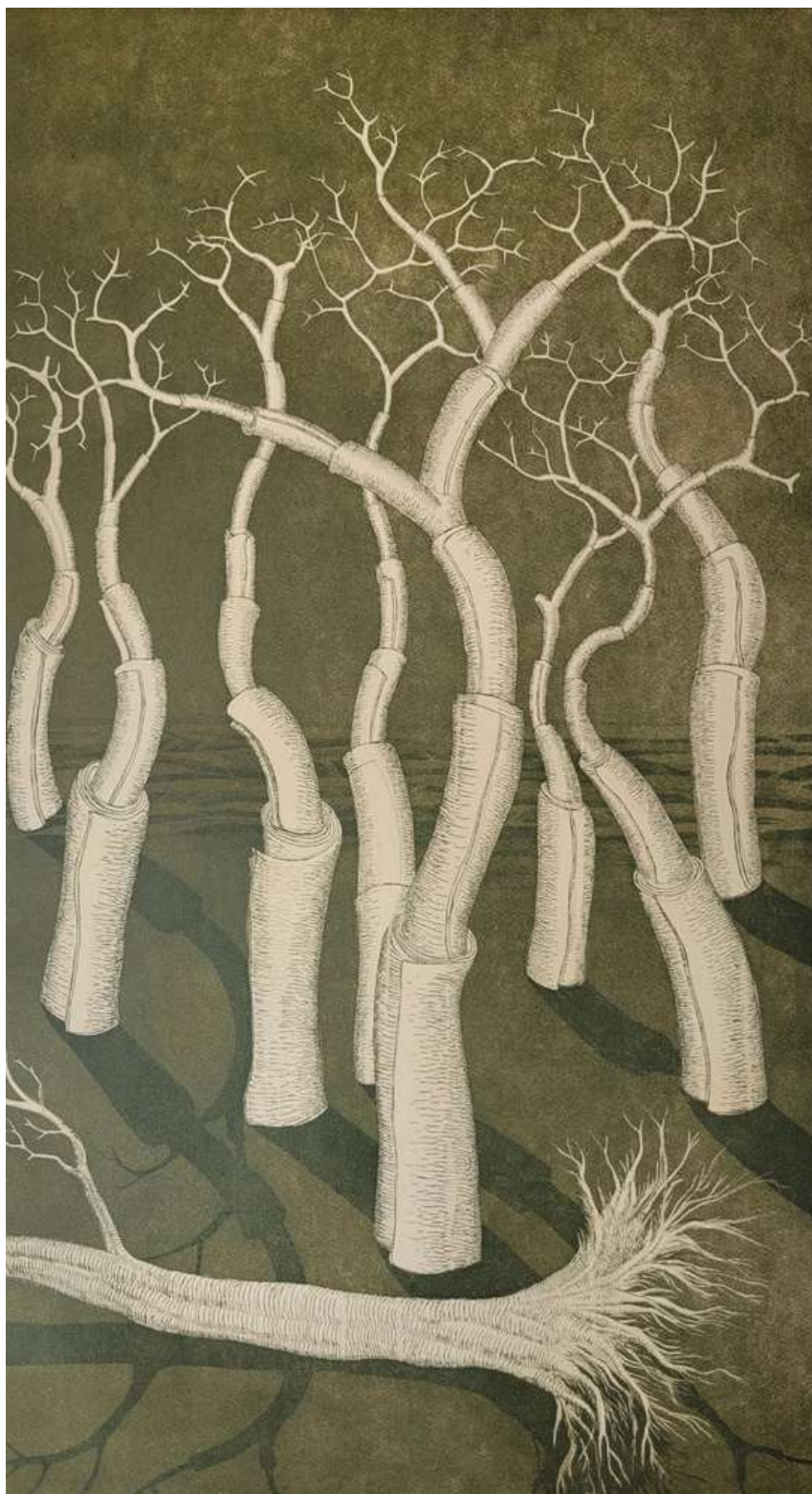
Gouache on Nepali paper pasted on board

18.5 x 26.75 inches

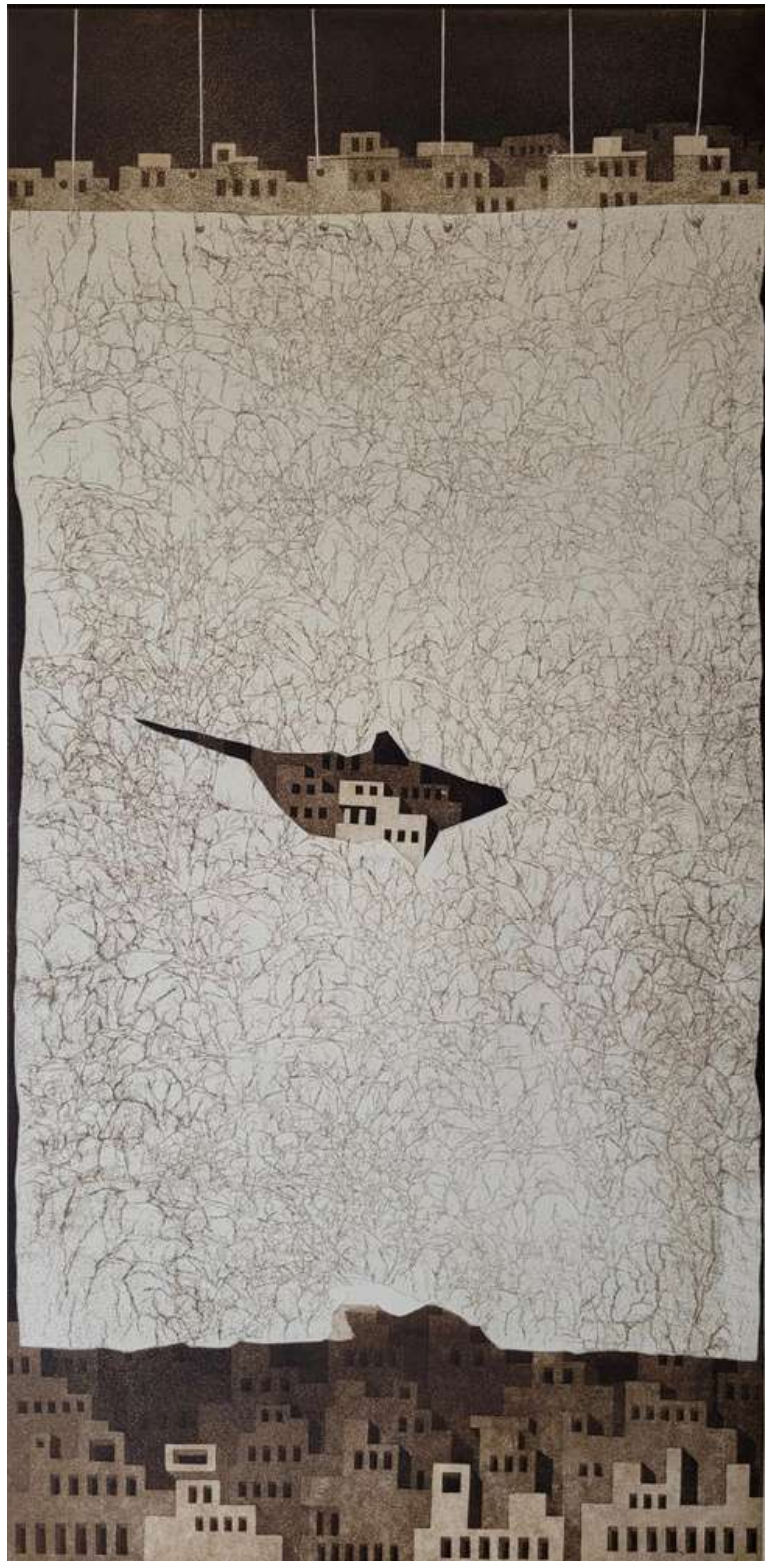
2014



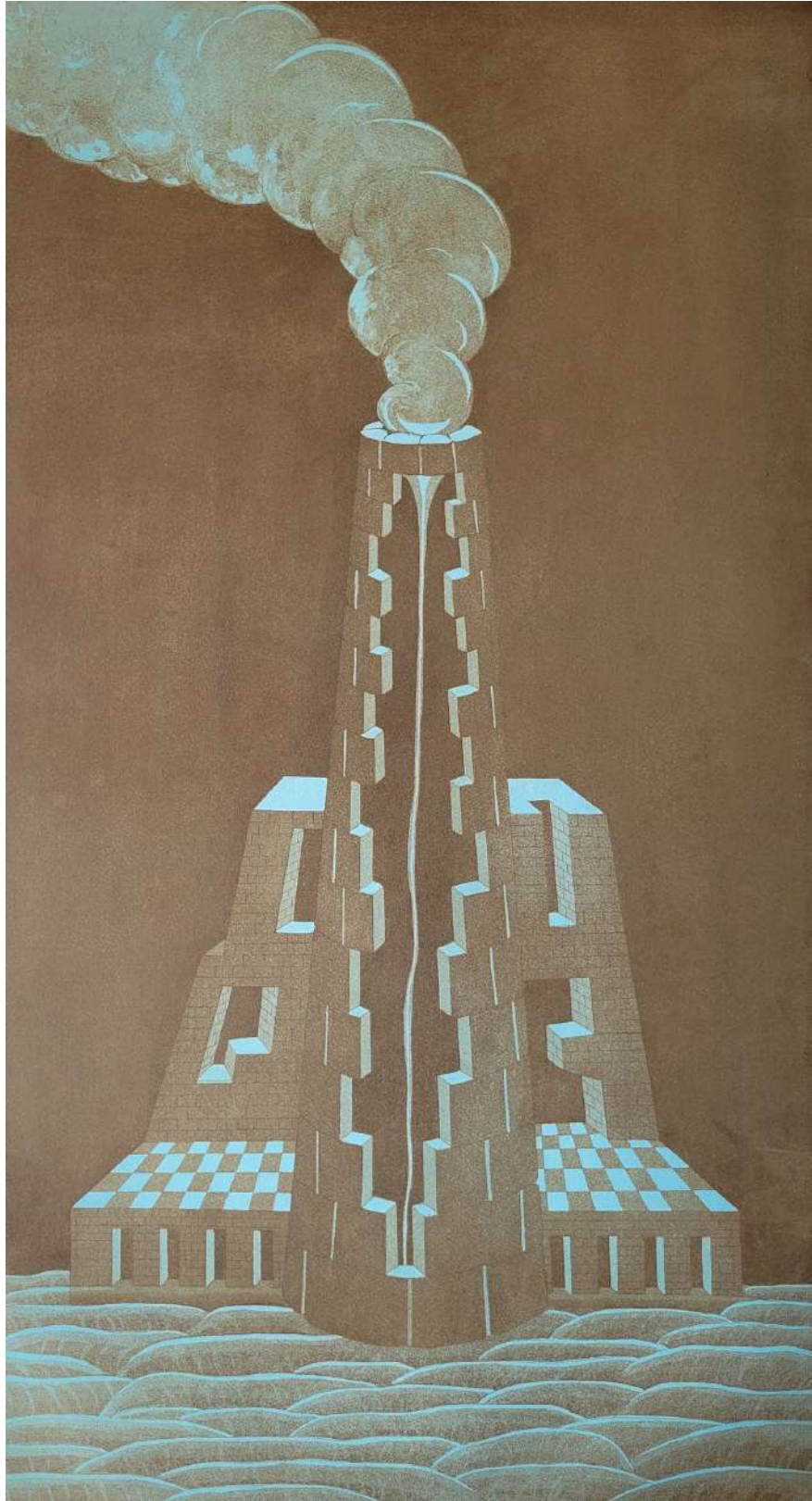
GIGI SCARIA
Waq Waq Tree
Etching on Somerset paper
20 x 36 inches
1/20
2022



GIGI SCARIA
Scroll
Etching on Somerset paper
20 x 36 inches
1/20
2022



GIGI SCARIA
Maps and Roots
Etching on Somerset paper
20 x 36 inches
1/20
2022



GIGI SCARIA
Hydrosphere I
Etching on Somerset paper
20 x 36 inches
1/20
2022



GIGI SCARIA
Conflicts of Interest
Acrylic on Canvas
48 x 60 inches
2023



HEMANGINI MAHARAU

Untitled

Drawing ink and pentouch paint marker on
acid free paper

Artwork - 16.34 x 11.61 inches

With frame - 17.91 x 13.19 x 1.38 inches

2023



HEMANGINI MAHARAU

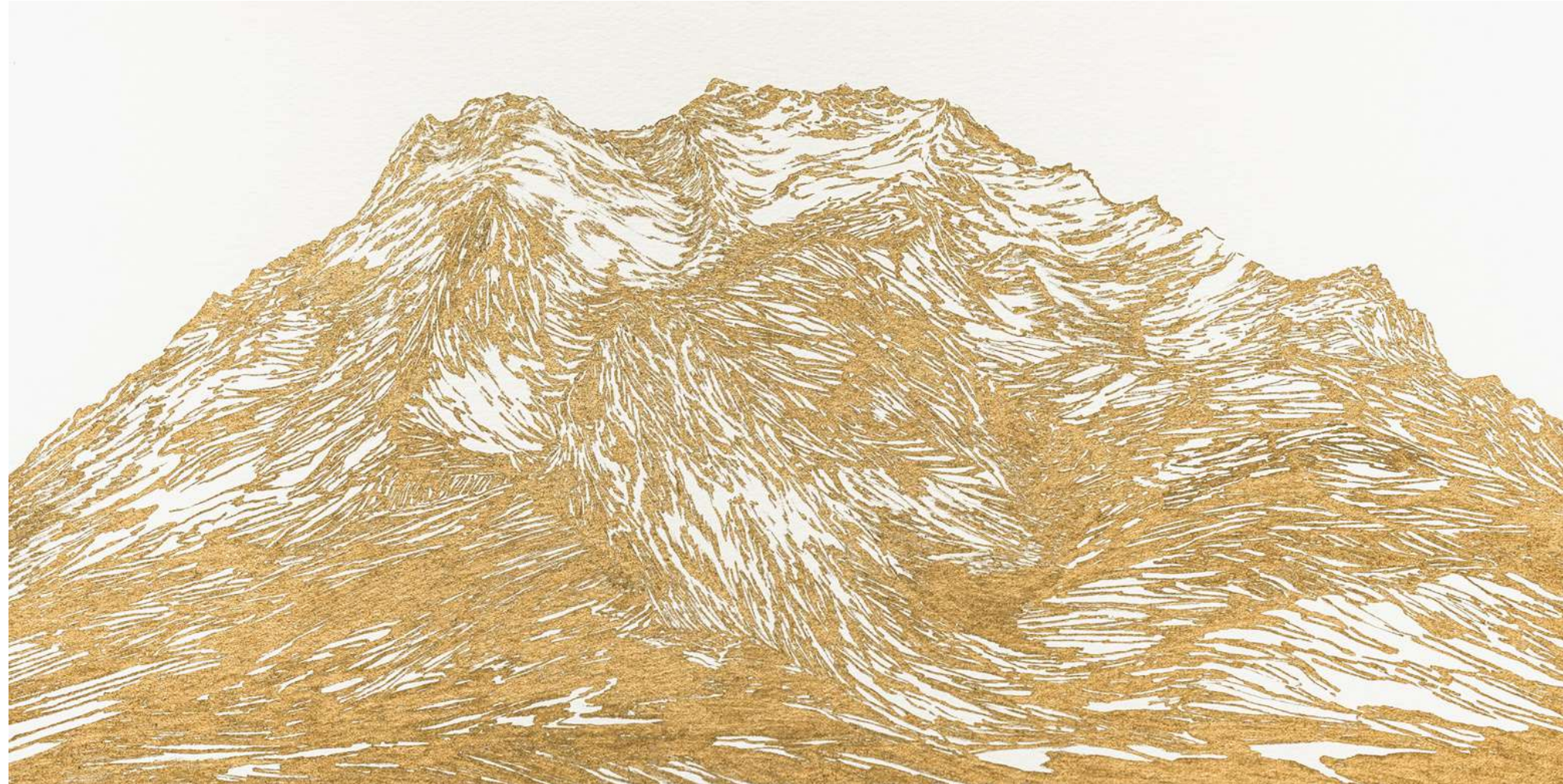
Untitled

Drawing ink and pentouch paint marker on
handmade paper

Artwork - 10.24 x 6.69 inches

With frame - 15.75 x 12.2 x 1.38 inches

2021



HEMANGINI MAHARAU

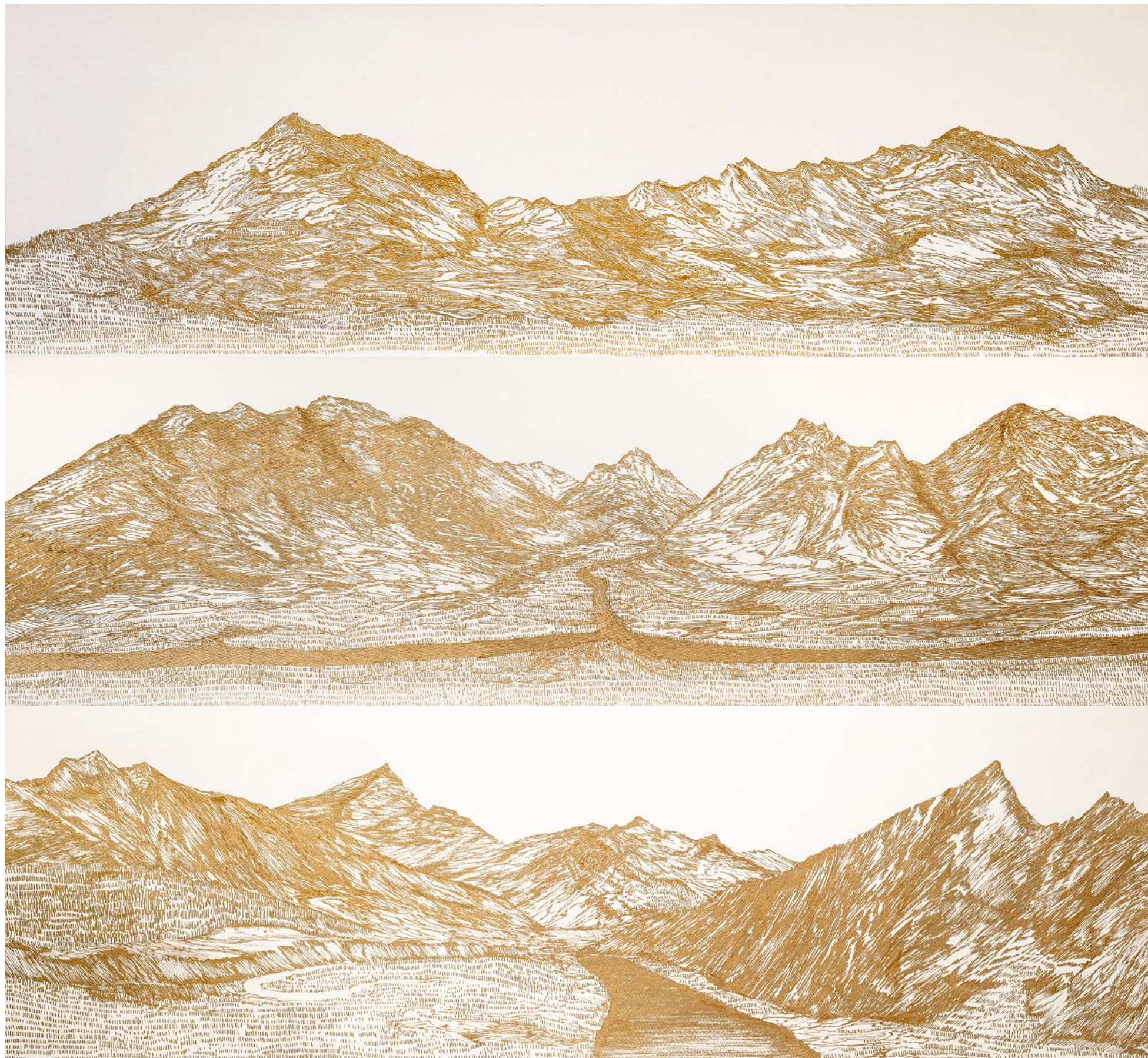
Can We Not Make a Hill Out of a Mountain Please?

Pentouch paint marker on acid free paper

Artwork - 14.17 x 7.48 inches

With frame - 19.69 x 13 x 1.38 inches

2023



HEMANGINI MAHARAU

The Orogeny of Matter

Pentouch paint marker on strathmore paper

Artwork - 38.19 x 12.01 inches (set of 3)

With frame - 38.58 x 12.4 x 0.98 inches

2023



JAGANNATH PANDA
Fatal Sublime
Acrylic, Fabric, Glue
72 x 180 inches
2009



JAGANNATH PANDA, *Fatal Sublime*, Acrylic, Fabric, Glue, 72 x 180 inches, 2009

Installed at 'Inscapes: In Search of a Place' curated by Premjish Achari, presented by LATITUDE 28, CCA, Bikaner House, New Delhi, 2023



JAGANNATH PANDA
Shifting Landscape
Mix media on paper
40 x 120 inches
2023



JOSH PS
Kalinga
Oil on canvas
78 x180 inches
2013



Installation, 'Inscapes: In Search of a Place' curated by Premjish Achari, presented by LATITUDE 28, CCA, Bikaner House, New Delhi, 2023



MADHURJYA DEY

Representative Image - Jatinga

Mystery: Scores of Birds

Commit 'Mass Suicide'

Oil on wooden board

6 x 8.2 inches

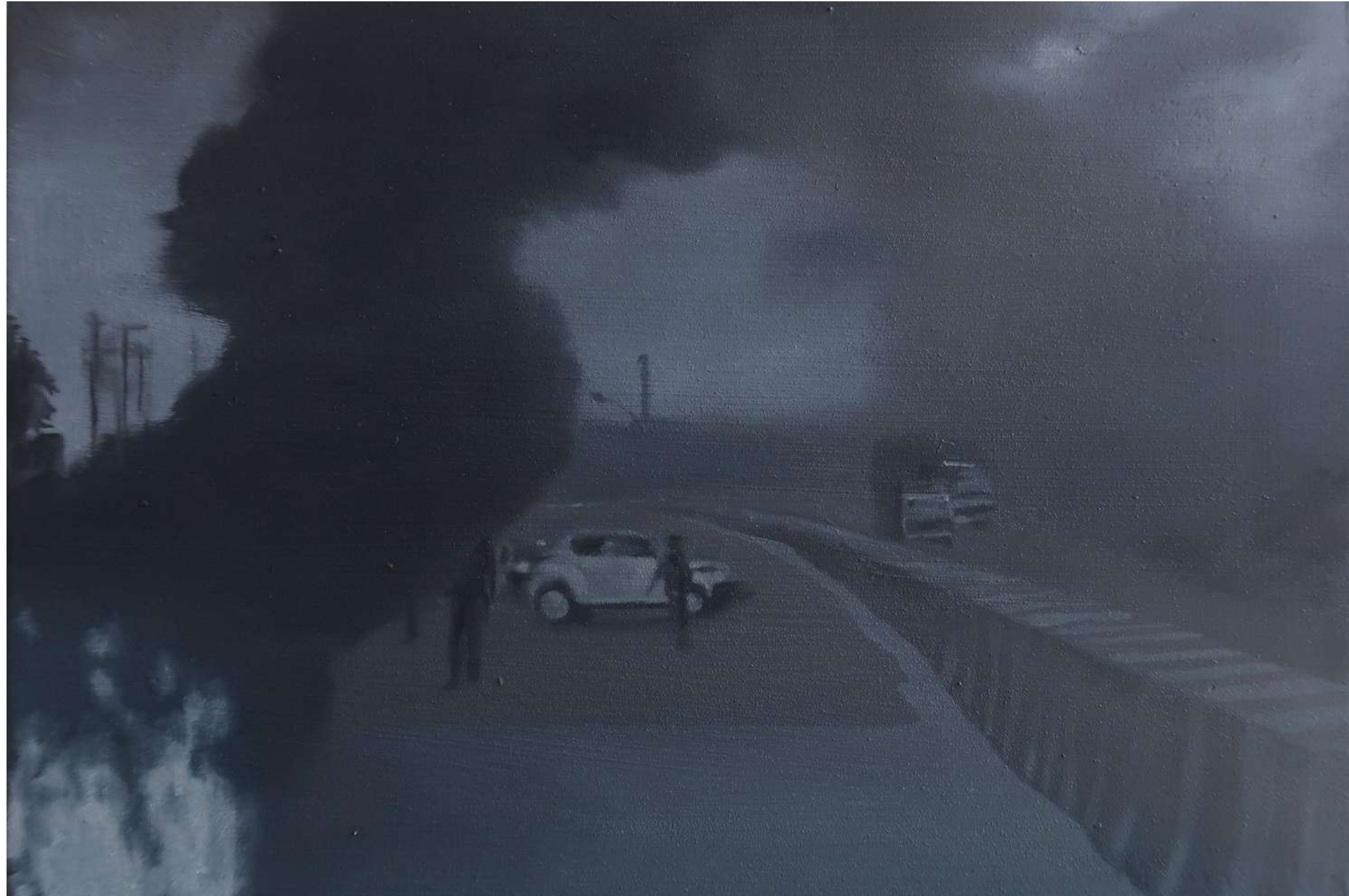
2023



MADHURJYA DEY
*Representative Image - Illegal
Coal Mining is Rampant at
Diyunbra in Dima Hasao.*
Oil on wooden board
6 x 8.2 inches
2023



MADHURJYA DEY
*Representative Image - State
Government Plans to Set Up
a Planetarium in Dima
Hasao.*
Oil on wooden board
6 x 8.2 inches
2023



MADHURJYA DEY
*Representative Image - Dima
Hasao Bandh: Mob Attacks Private
Vehicles, Police Fire in Air.*
Oil on wooden board
6 x 8.2 inches
2023



MANSOOR MANSOORI

Fence

Oil on canvas

36 x 48 inches



MANSOOR MANSOORI
Dead of the Night - I
Oil on canvas
18 x 24 inches



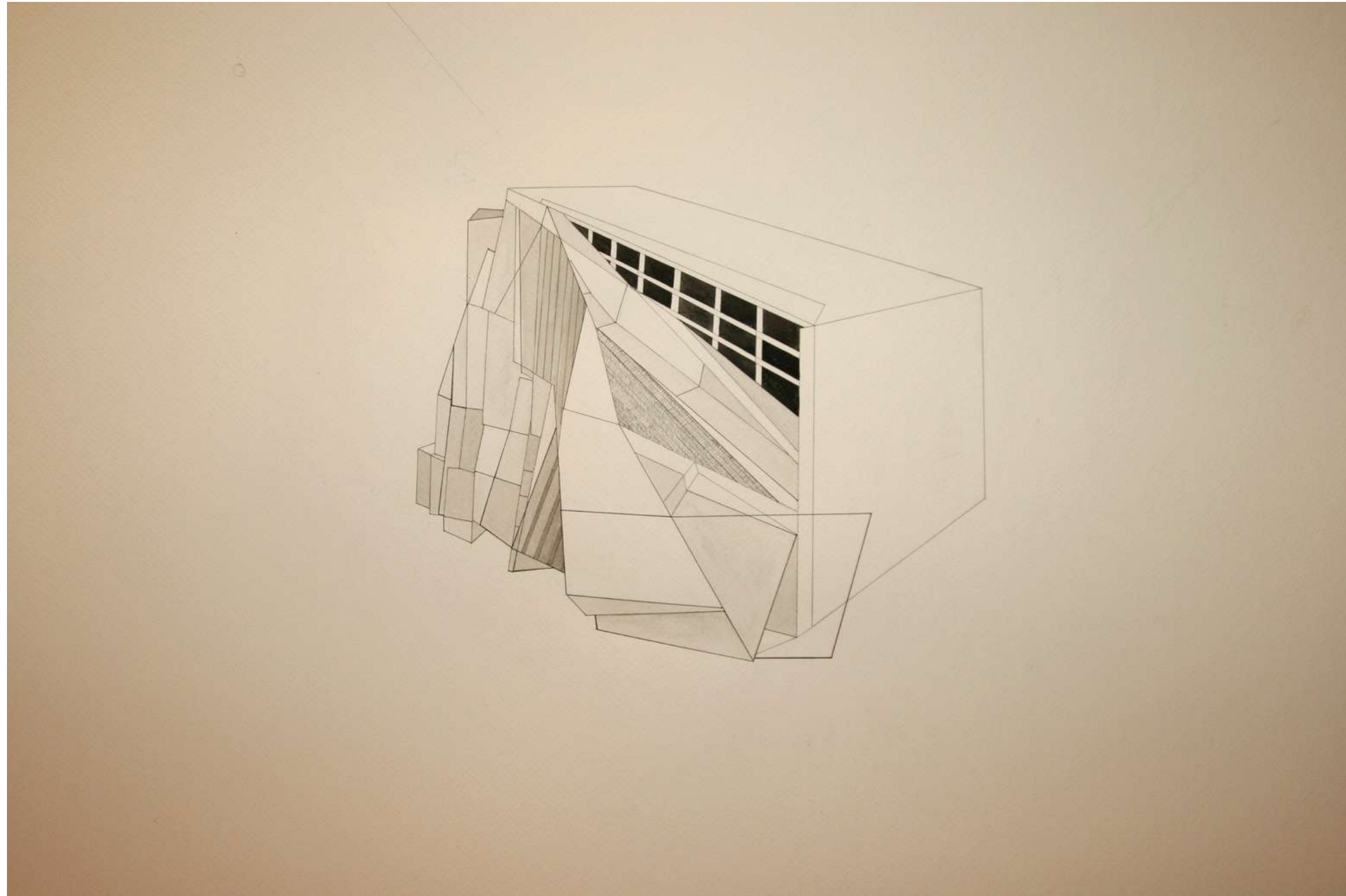
MANSOOR MANSOORI
Dead of the Night - II
Oil on canvas
18 x 24 inches



MANSOOR MANSOORI
Dead of the Night - III
Oil on canvas
18 x 24 inches



MANSOOR MANSOORI
Dead of the Night - IV
Oil on canvas
18 x 24 inches



NIYETI CHADHA KANNAL

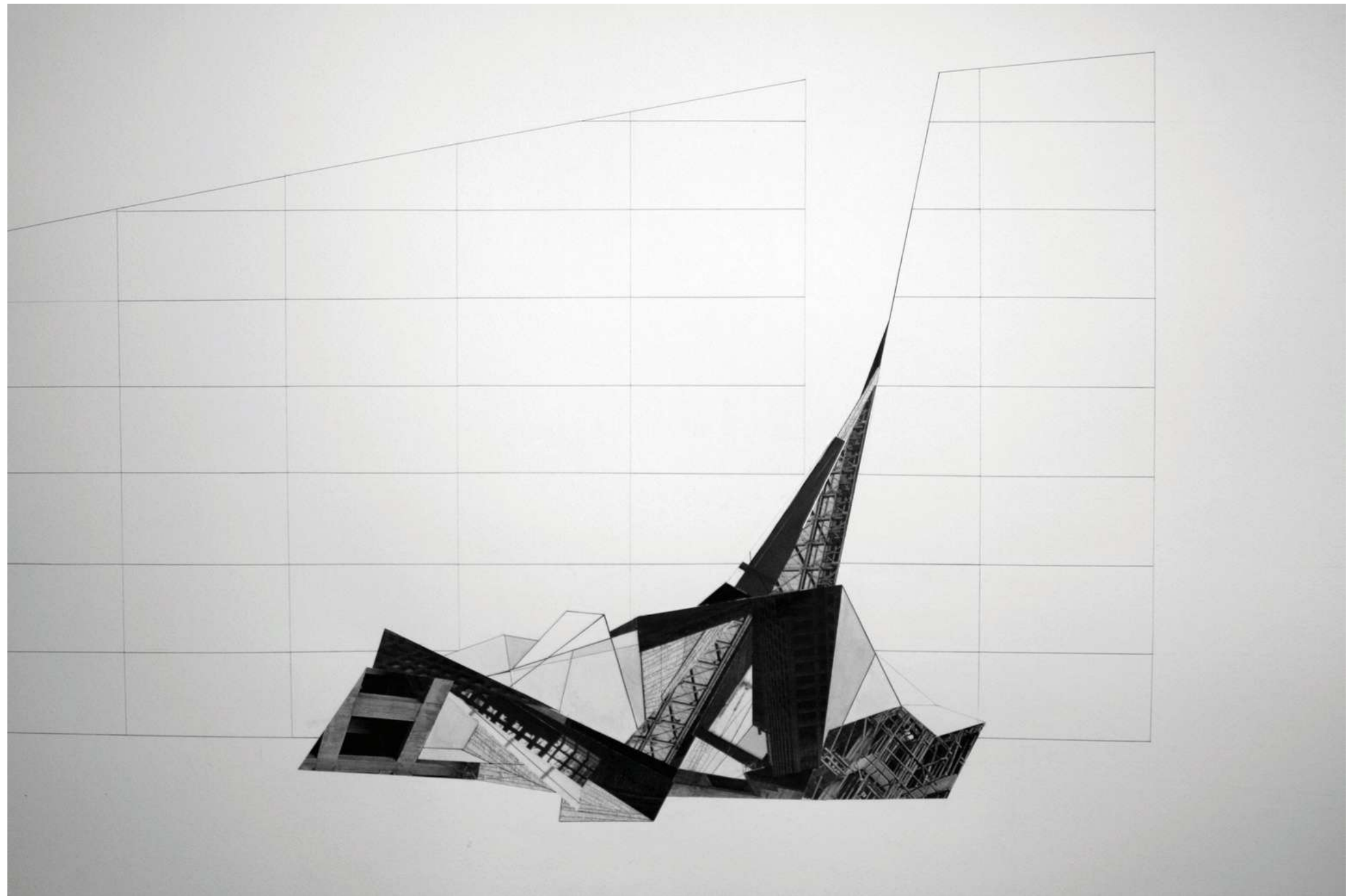
Untitled

Isograph pen and

Watercolour on paper

25 x 35 inches

2016



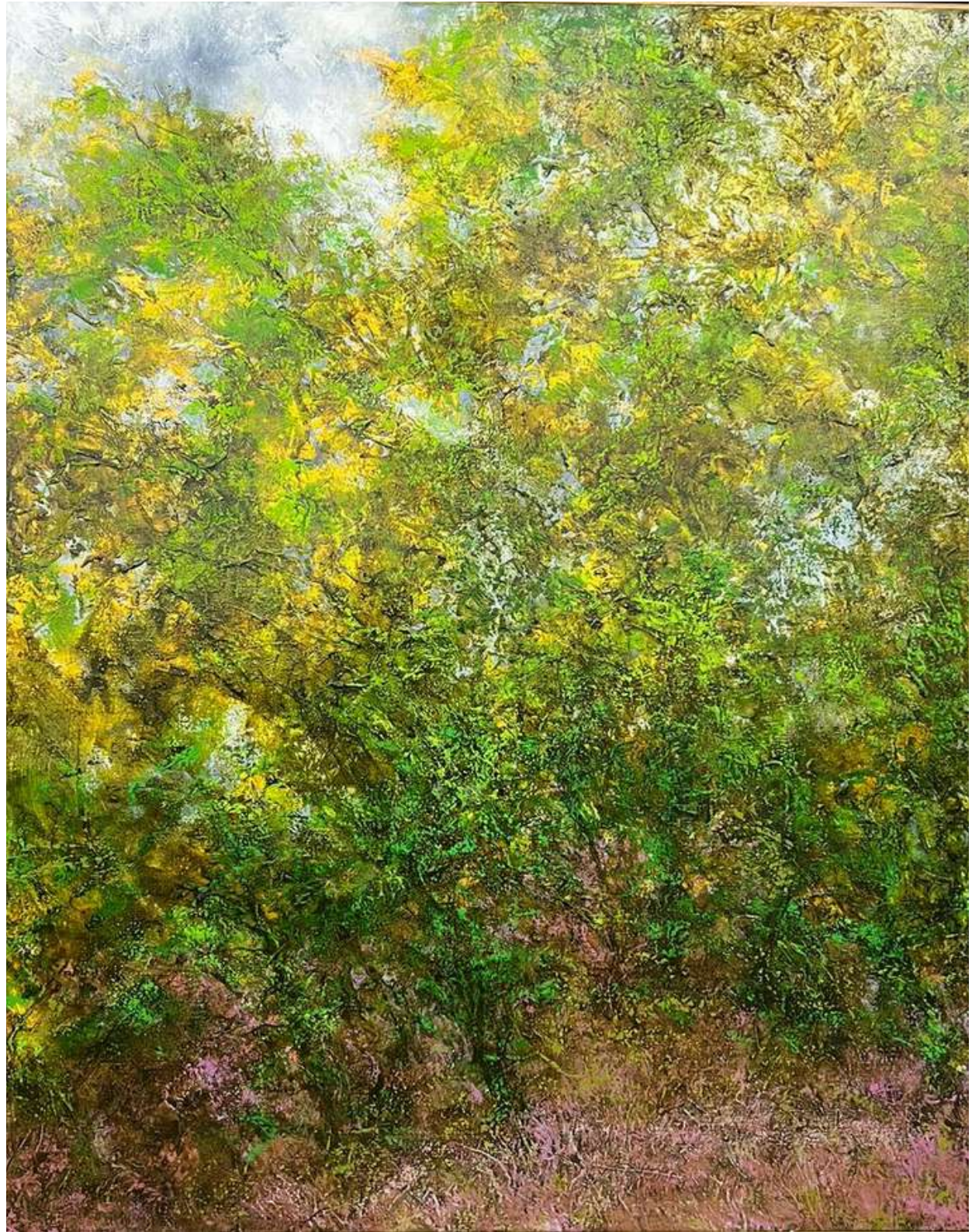
NIYETI CHADHA KANNAL
Untitled
Collage on paper
24.5 x 32 inches



NIYETI CHADHA KANNAL
Sketch 2
Welded mild steel
6.5 x 4.5 x 2 inches
2016



NIYETI CHADHA KANNAL
Sketch 6
Welded mild steel
21 x 8 x 4.5 inches
2016



PARAMJIT SINGH

Untitled

Oil on canvas

60 x 48 inches

2023



PARAMJIT SINGH, *Untitled*, Oil on canvas, 60 x 48 inches, 2023
Installed at 'Inscapes: In Search of a Place' curated by Premjish Achari, presented by LATITUDE 28, CCA, Bikaner House,
New Delhi, 2023



PRANAY DUTTA

Day Zero

Acrylic on photographic vinyl
sheet

66 x 96 inches

2022



PRANAY DUTTA

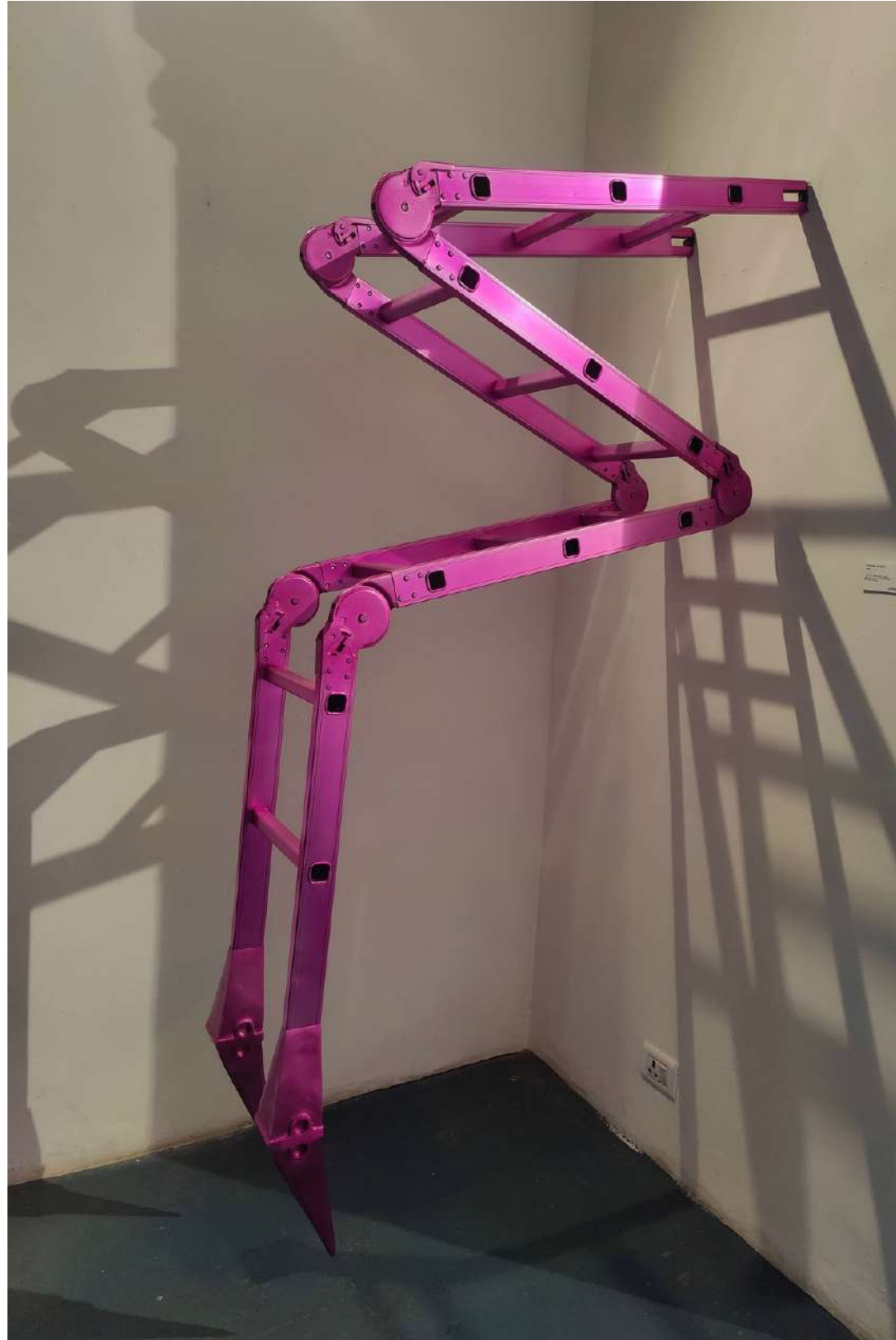
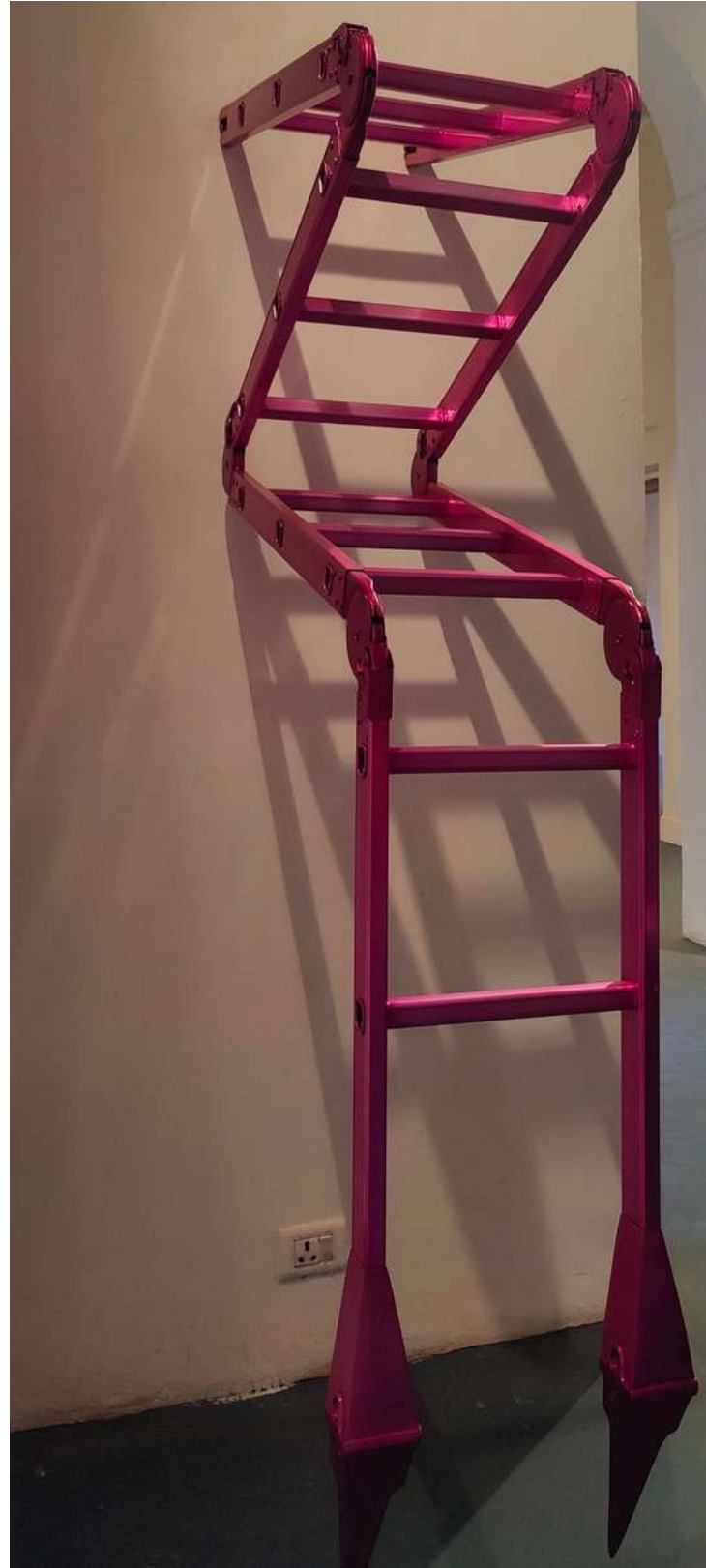
Day Zero

Single channel video

Duration 7 min 43 sec

Variable dimension

2022



RITABAN GHOSH
Oppressive Stillness in the Air
Anodized Aluminum, Iron and
Mild Steel
38.5 x 14.5 x 11 inches
2023



SAREENA KHEMKA
Urban Fragments (1)
Mixed media on paper
9 x 9.5 inches
2023



SAREENA KHEMKA
Urban Fragments (2)
Mixed media on paper
6.5 x 7.5 inches
2023



SAREENA KHEMKA
Urban Fragments (3)
Mixed media on paper
8.5 x 11 inches
2023



SAREENA KHEMKA
Urban Fragments (4)
Mixed media on paper
10 x 8 inches
2023



SAREENA KHEMKA
Urban Fragments (5)
Mixed media on paper
9 x 7 inches
2023



SAREENA KHEMKA
Urban Fragments (6)
Mixed media on paper
10 x 9 inches
2023



SAREENA KHEMKA
Urban Fragments (7)
Mixed media on paper
10 x 8 inches
2023



SAREENA KHEMKA
Urban Fragments (8)
Mixed media on paper
9.5 x 9 inches
2023



SAREENA KHEMKA
Fragmented Landscapes (5)
Mixed media on cast cement
with resin, copper leaf and
scrap metal
9 x 10 x 11 inches
2023



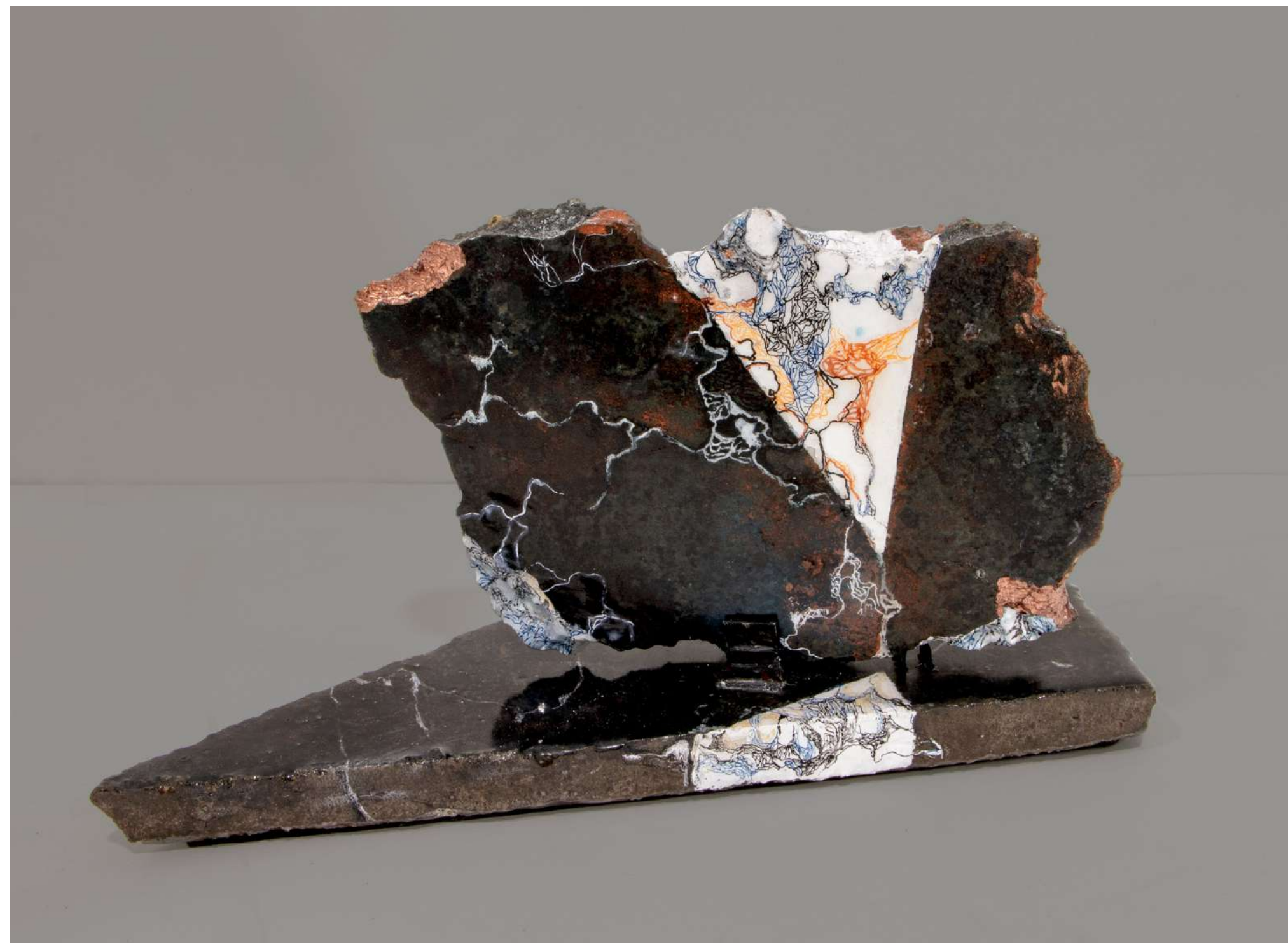
SAREENA KHEMKA
Fragmented Landscapes (6)
Mixed media on terracotta
roofing tile with resin
9.5 x 5 x 8 inches
2023



SAREENA KHEMKA
Fragmented Landscapes (7)
Mixed media on terracotta roofing tile
with resin
8.5 x 5.5 x 9.5 inches
2023



SAREENA KHEMKA
Fragmented Landscapes (8)
Mixed media on cast cement
and terracotta roofing tile
with resin
7x 6.5 x 5 inches



SAREENA KHEMKA
Fragmented Landscapes (9)
Mixed media on cast cement
with resin
10 x 6 x 4.5 inches
2023



SAREENA KHEMKA
Fragmented Landscapes (10)
Mixed media on cast cement with
resin
10 x 8 x 7.5 inches
2023



SAREENA KHEMKA

Fragmented Landscapes (11)

Mixed media on scrap metal on
wooden base with cast cement,
copper leaf and resin

19 x 9.5 x 13 inches

Scrap metal piece - 5.5 x 4 x 5
inches

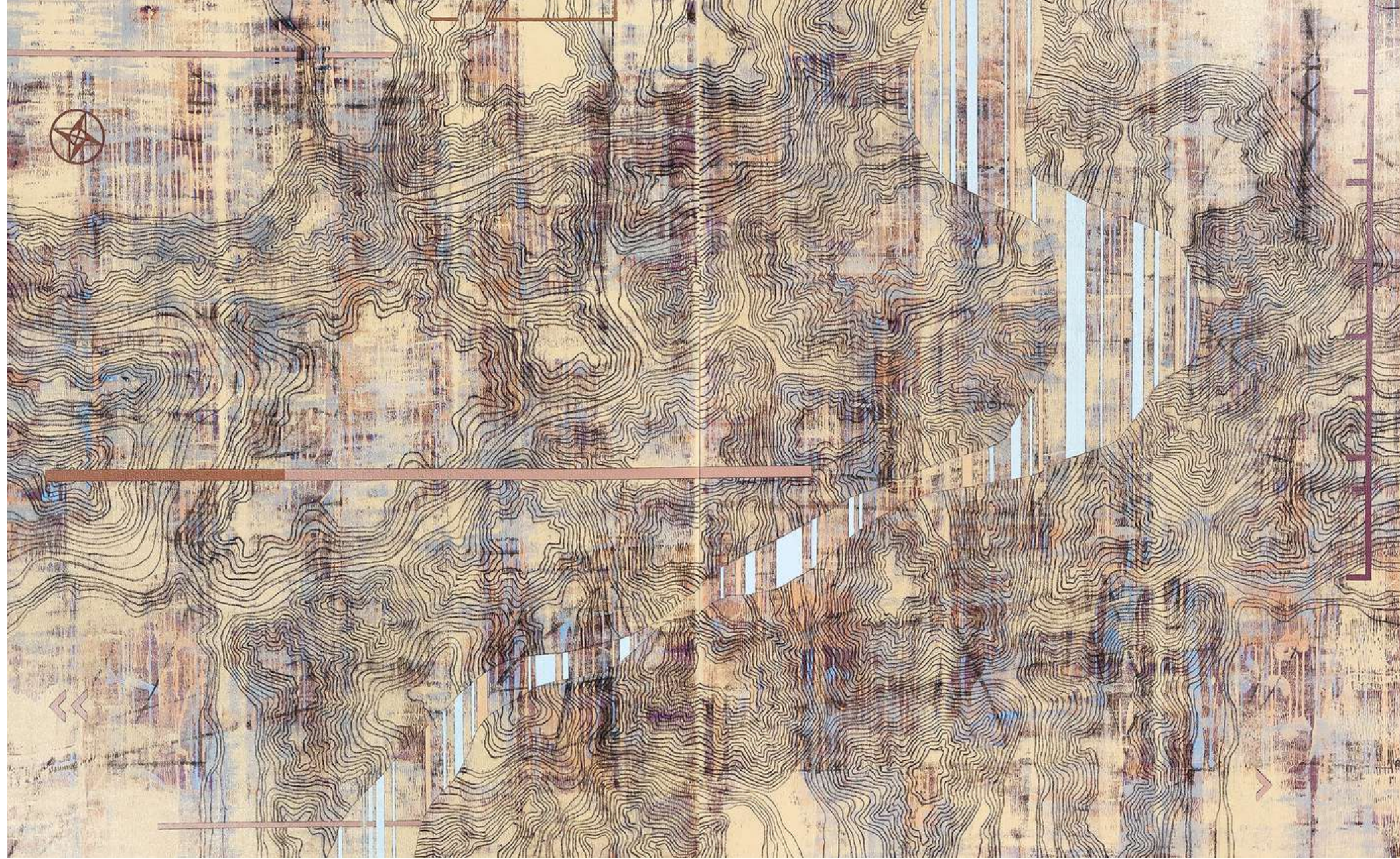
2023



SHAJI APPUKUTTAN
From Here to the Other Side
Tempera on canvas with
layered rice paper
120 x 24 inches
2023



SHAJI APPUKUTTAN
From Here to the Other Side
Acrylic on canvas
108 x 72 inches
2023



SHALINA VICHITRA
"Un'Divided"
Acrylic and charcoal on
canvas
108 x 66 inches
(54 x 66 inches each)
2023



SIBDAS SENGUPTA
Holes in Reality I
Oil on canvas
60 x 72 inches
2022



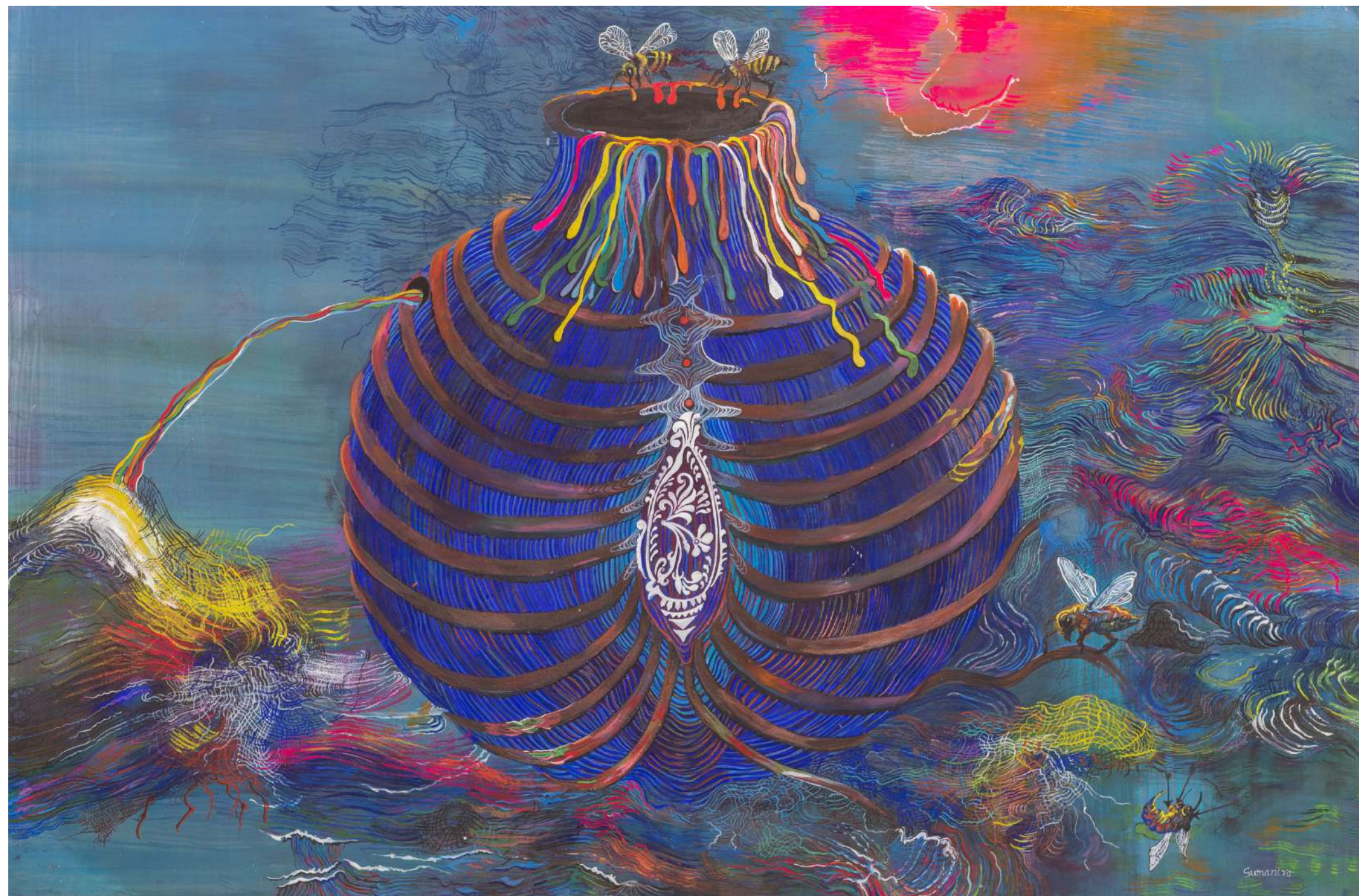
SUDHIR PATWARDHAN
Hill
Acrylic on paper
26 x 39 inches
2004



SUDHIR PATWARDHAN
Scar Quarry
Acrylic on paper
25 x 35 inches
2023



SUDHIR PATWARDHAN
Solace Place
Oil on canvas
9 x 12 inches
2023



SUMANTRA SENGUPTA

Untitled

Watercolour on archival paper

With frame - 66 x 46 inches



SUMANTRA SENGUPTA

Untitled

Watercolour on archival paper

With frame - 66 x 46 inches



SUMANTRA SENGUPTA

Untitled

Watercolour on archival paper

With frame - 66 x 46 inches



SHUBHAM KUMAR

Aari-I

Print on paper

24 x 12 inches each

Dptych

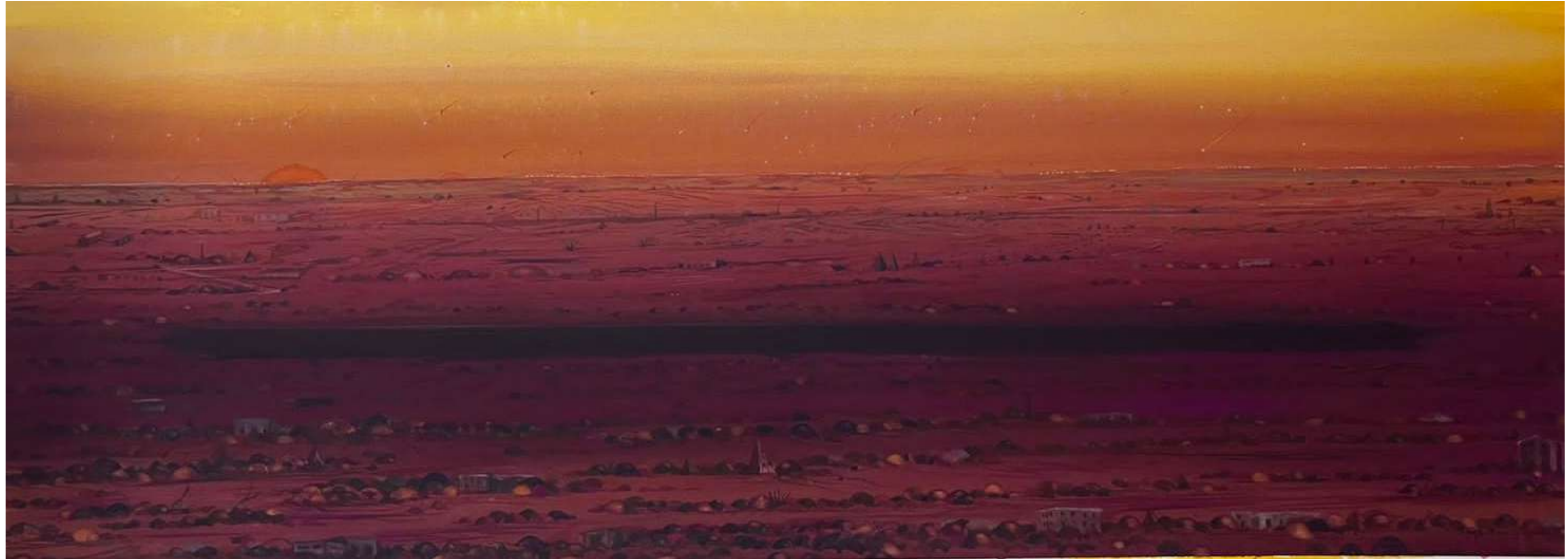
2021



SHUBHAM KUMAR
Nilagai aur Sapna
Watercolour on paper
22 x 30 inches
2023



SHUBHAM KUMAR
Nilagai aur Sapna
Watercolour on paper
22 x 30 inches
2023



SUJITH S.N.
Untitled
Pigments on Paper
26 x 72 inches



UNNIKRISHNAN C
*Deuteronomy of My Journey
to My Land.*
Acrylic on Brick
Variable size
2023



UNNIKRISHNAN C
*Deuteronomy of My Journey
to My Land.*
Acrylic on Brick
Variable size
2023



UNNIKRISHNAN C
*Deuteronomy of My Journey
to My Land.*
Acrylic on Brick
Variable size
2023



UNNIKRISHNAN C
*Deuteronomy of My Journey
to My Land.*
Acrylic on Brick
Variable size
2023



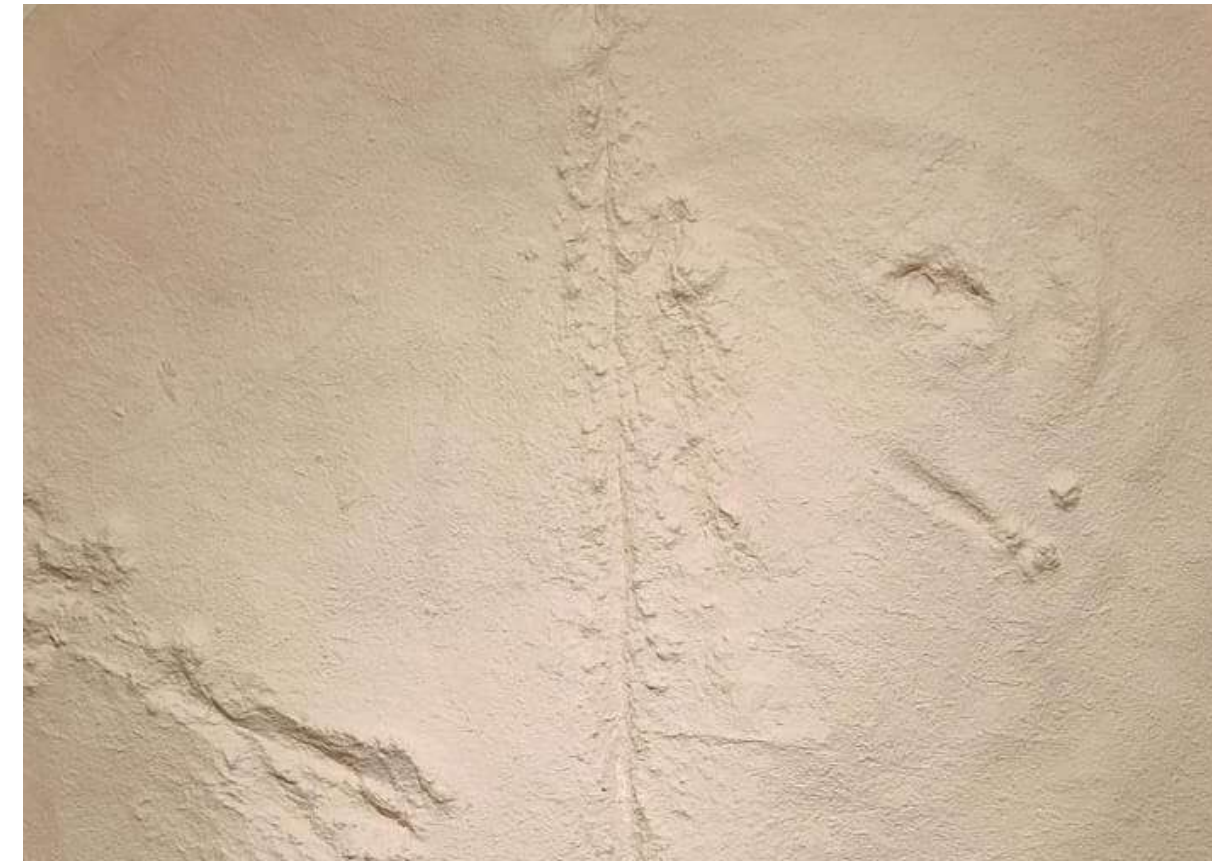
UNNIKRISHNAN C
*Deuteronomy of My Journey
to My Land.*
Acrylic on Brick
Variable size
2023



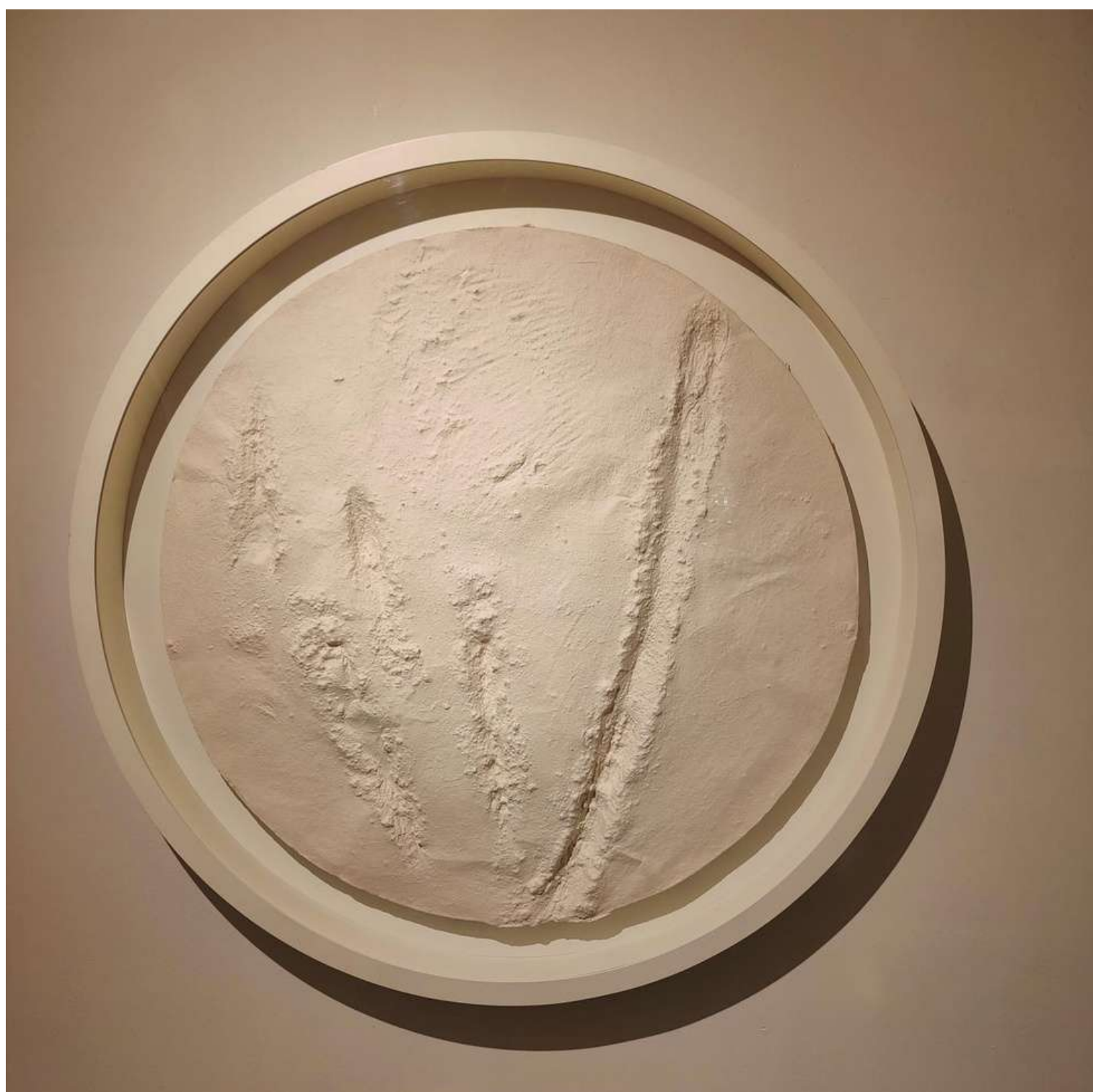
VASUDHA THOZHUR
*Old Practices New
Landscapes*
Oil on canvas
82.7 x 117 inches
2015 – 2018



VIBHA GALHOTRA
World is Flat
Metal and mirror
81 x 66 x 5 inches
Edition of 3
2023



VIBHA GALHOTRA
Wounded
Constructed Korean Hanji paper
70 (Dia) x 6 inches
Edition of 3
2020



VIBHA GALHOTRA

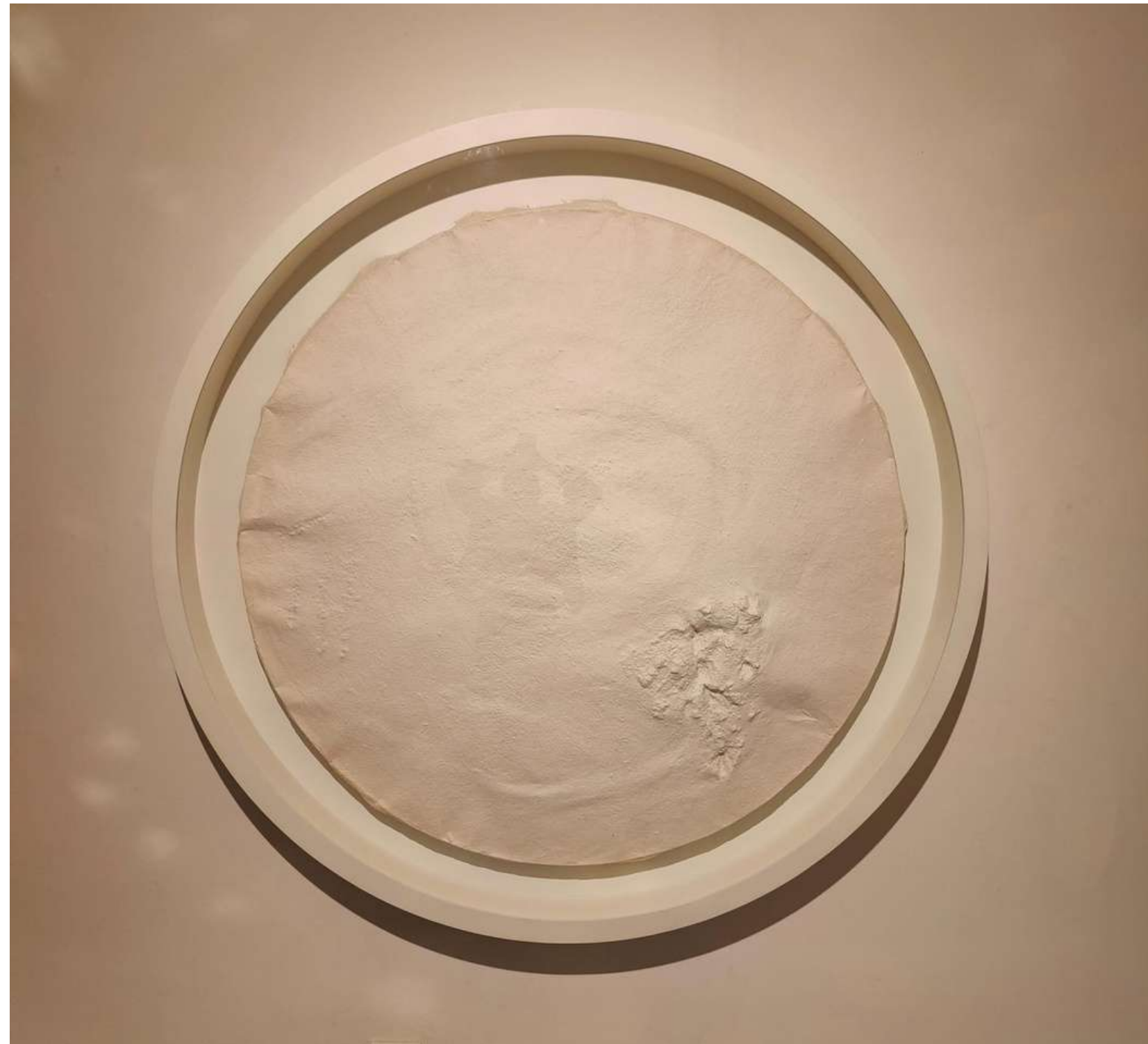
Wounded

Constructed Korean Hanji paper

70 (Dia) x 6 inches

Edition of 3

2020



VIBHA GALHOTRA

Wounded

Constructed Korean Hanji paper

70 (Dia) x 6 inches

Edition of 3

2020



Installation, 'Inscapes: In Search of a Place' curated by Premjish Achari, presented by LATITUDE 28, CCA, Bikaner House, New Delhi, 2023



VINOD BALAK
Untitled
Acrylic on canvas
72 x 48 inches



WASWO X. WASWO

Getting There is Half the Fun

Stone pigments on vintage lithographs

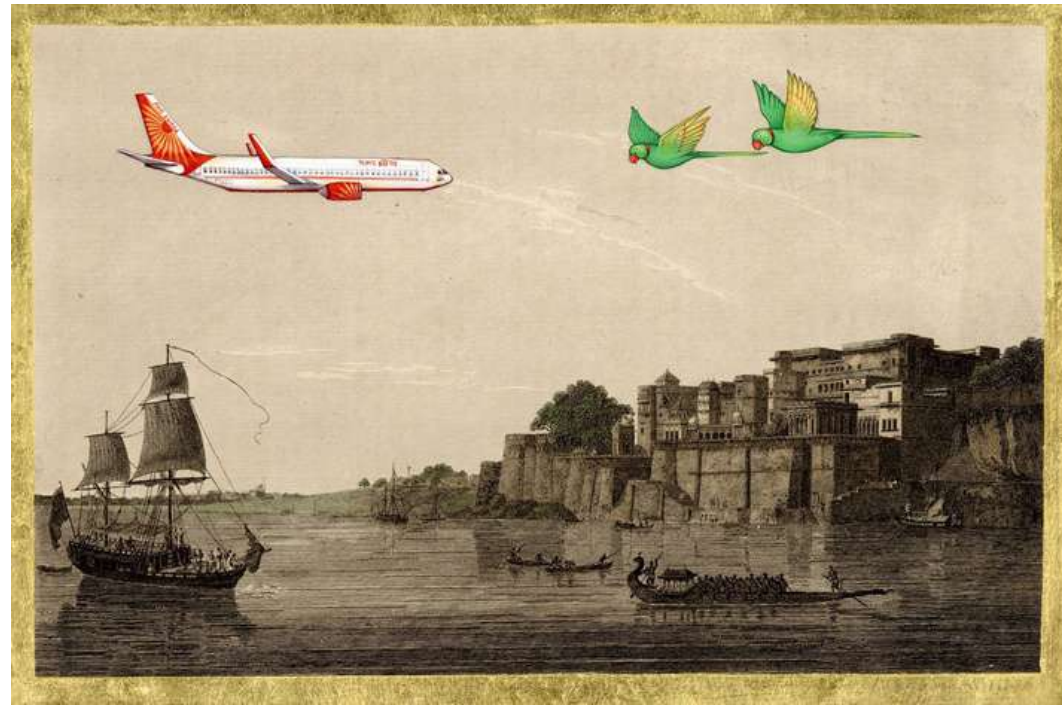
(Painted directly upon vintage engravings, mostly taken from John Pinkerton's translations of the writings of an assortment of travellers in *Voyages and Travels in All Parts of the World* (Eighth Volume), printed in London.)

2023

ATTITUDE 28



WASWO X. WASWO
Getting There is Half the Fun
Stone pigments on vintage
lithographs
2023



WASWO X. WASWO
Getting There is Half the Fun
Stone pigments on vintage
lithographs
2023

WASWO X. WASWO



WASWO X. WASWO
Getting There is Half the Fun
Stone pigments on vintage
lithographs
2023

ABOUT LATITUDE 28

Since 2010, LATITUDE 28 has probed into a gallery practice that is lateral, disruptive and avant-garde. Mentoring and nurturing emerging artists from South Asia, the gallery focuses on experimentation with medium and material fostering critical dialogue, perspective and practices by writers, critics and researchers alike. These maker-market relationships amongst collectors, art enthusiasts and art practitioners have grown through the gallery's interactive incubation space, where ideas have been generated through innovative curatorial projects located on the cusp of art history and socio-political context through site-specific artworks and artist talks. The gallery makes art accessible and inclusive with exhibitions located at the intersection of artists, institutions and art education. LATITUDE 28's vision is shaped by its Founder/Director, Bhavna Kakar, who is also the Founder and Editor-in-Chief of TAKE on Art - South Asia's leading contemporary art publication.

For more information contact:

latitude28@gmail.com

www.latitude28.com

+91 11 4679 1111



LATITUDE 28