

PLAYHOUSE OF HER MIND



Bakula Nayak | Gopa Trivedi | Pranati Panda |
Revati Sharma Singh | Shalina Vichitra | Shalini Dam

15th September – 18th October, 2021

LATITUDE 28

F - 208, First Floor, Lado Sarai, New Delhi – 110030

Playhouse of Her Mind dwells upon memories, metaphors, allegories, dreamscapes, among other forms, to confront the notions of appropriation of present-day realities and future possibilities. Bringing together strong female voices from the annals of art history, this exhibition focuses on the mechanisms of erasure and its ramifications through the artists' lived experiences. It is about artists giving the amorphousness of space, physical dimensions through shape, colour, form and structure, to accentuate its experience and meaning.

Bakula Nayak uses vintage blueprints (of factory drawings) to represent the irreverent human construction and manufacturing processes, calling for a change from anthropocentrism to biocentrism where all forms of life have an intrinsic value. **Gopa Trivedi's** sensibilities are deeply rooted in the Indian Miniaturist traditions, where she attempts to re-infuse and often re-contextualize miniature court styles by fusing traditional painting methods with new media. **Pranati Panda** plays with different materials, techniques, patterns, and textures. Her work explores the fragility of mind, a sense of wonder about the working of one's memory and about the visible and the invisible. She finds fabric and thread as the perfect medium of self-expression. **Revati Sharma Singh** brings forth intricate assemblages working with a variety of textural surfaces. She uses the language of grains, the language of food, the language of hunger and that of abundance, it's the language we all speak despite our differences in race, colour, class or religion. **Shalina Vichitra** traces the spaces uncharted as complex cartographic like terrains. Her works are simply chronicles which frame any piece of land, a chunk, markings on its surface, its layers and the patterns in the overall fabric of the Earth. **Shalini Dam** turns materials like terracotta to illusionistic surfaces which problematize the monolithic binaries and explore the contradictions, the dualities that lie hidden under the surface.

The hyper-presence of textures in all these works exude a certain kind of tangibility, while bringing out the significance of materiality in empowering the self-expression. In an increasingly polarized world, existing in binaries, where conscious division on the basis of identity has become the norm, this exhibition can be read in multiple ways. It is a palpable rendition of character in a feeling, a frame of mind, a visceral response; an adjective that makes tangible as metaphor, elusive ideas or the texture of a distant memory. It represents more than a physical faculty.

REVATI SHARMA SINGH



Nothing be Lost

Handmade Sterling silver grains on jute and acrylic with Resin
18 x 14 inches approx.

2018



Nothing be lost 4

Handmade Sterling silver grains on jute and acrylic with Resin
18 x 14 inches approx.

2018

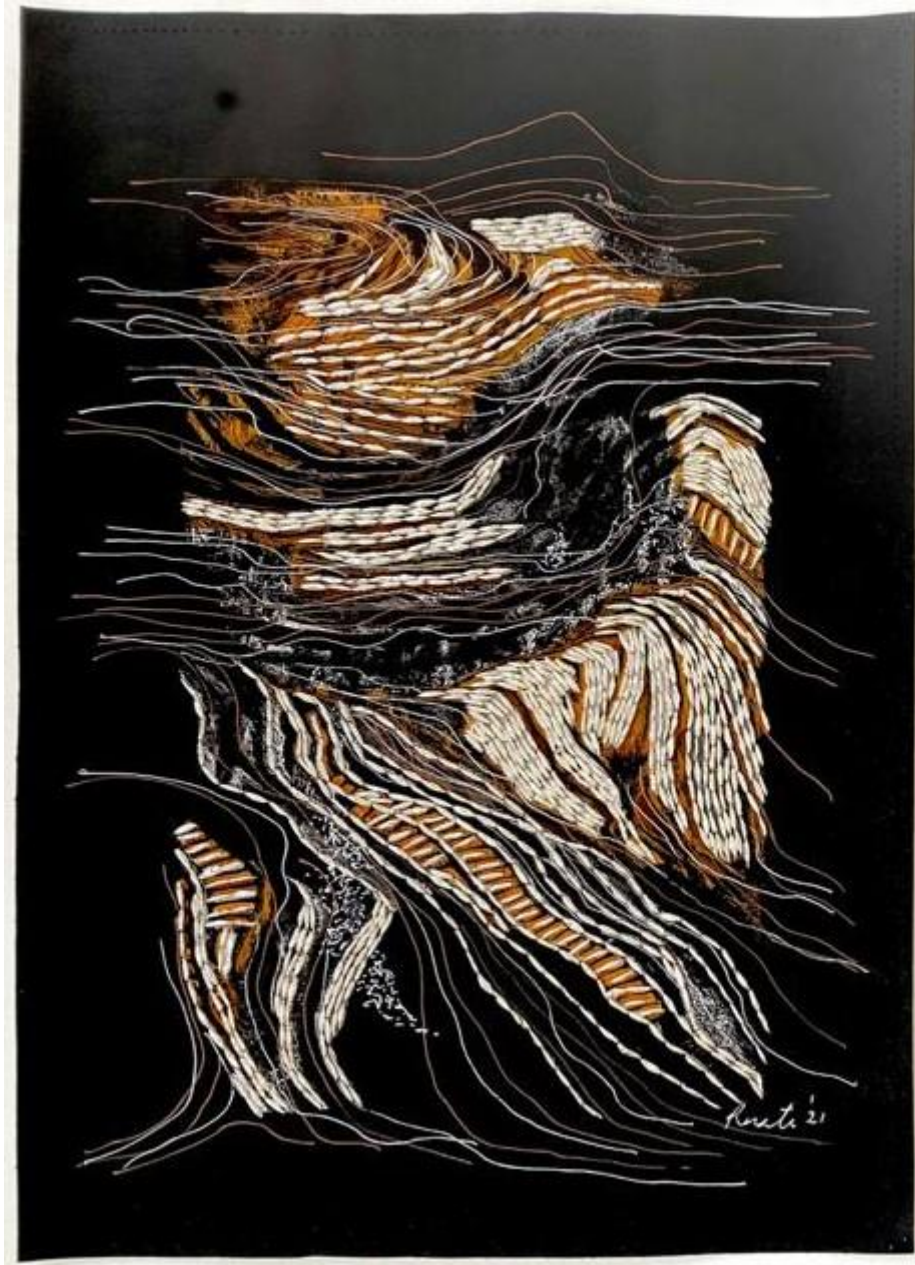


The Creation Fractal Myth 1

Handmade Sterling silver grains stitched on Canvas with archival ink and acrylic paint

12 x 16.5 inches each

2021



The Creation Fractal Myth 2

Handmade Sterling silver grains stitched on Canvas with archival ink and acrylic paint

12 x 16.5 inches each

2021

SHALINI DAM



Diversions Ahead

Terracotta

22 x 22 Inches

2021



Round and Round the Merry-go-round
Terracotta
22 x 22 Inches
2021



And We All Stand Apart

Terracotta

22 x 22 Inches

2021



Not Everyone Will Dance in the Rain

Terracotta

150 cm x 230 cm (wall)

150 cm x 150 cm x 50 cm (floor)

2021

BAKULA NAYAK

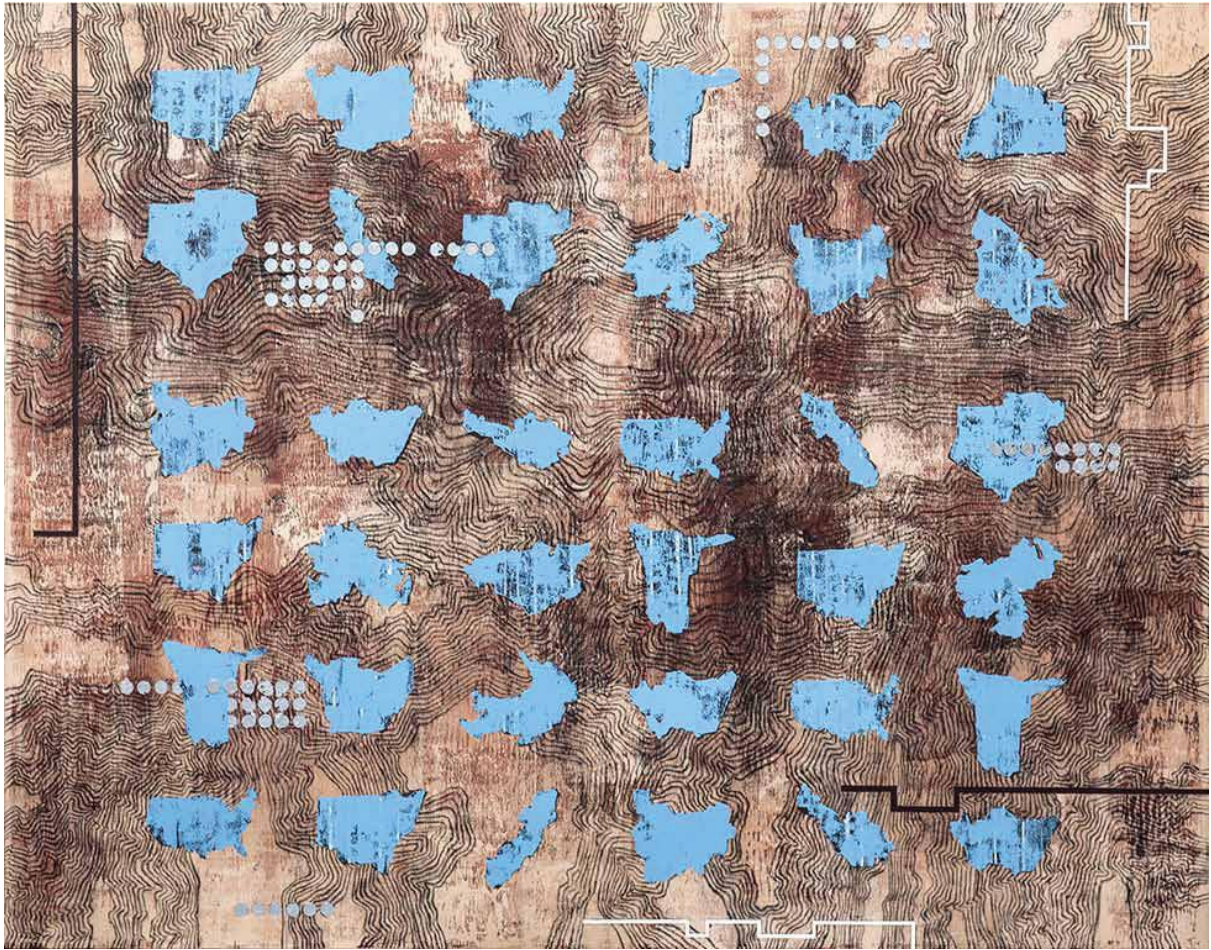


Where it began
Mixed media
22 x 30 Inches
2020

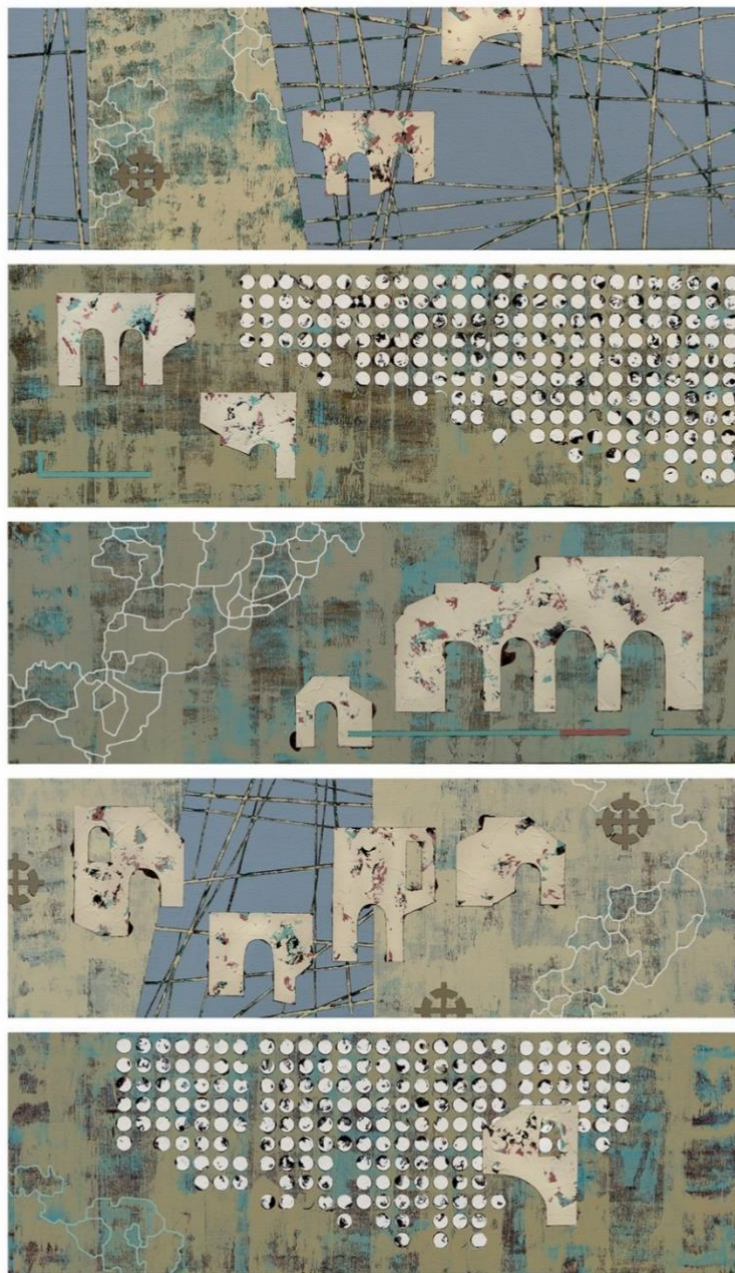


Chorus of the Quails
Mixed media
22 x 30 Inches
2020

SHALINA VICHITRA



One
Acrylic and charcoal on canvas
52 x 66 inches
2013



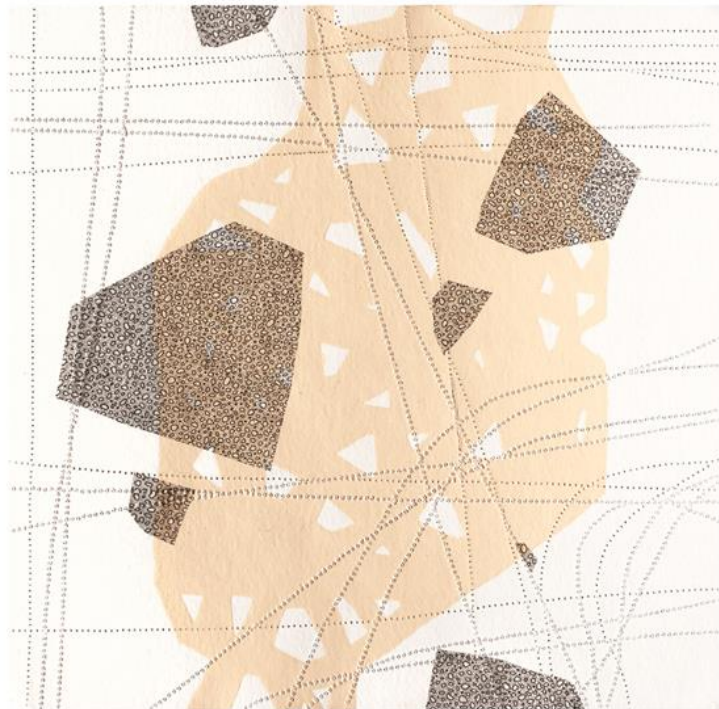
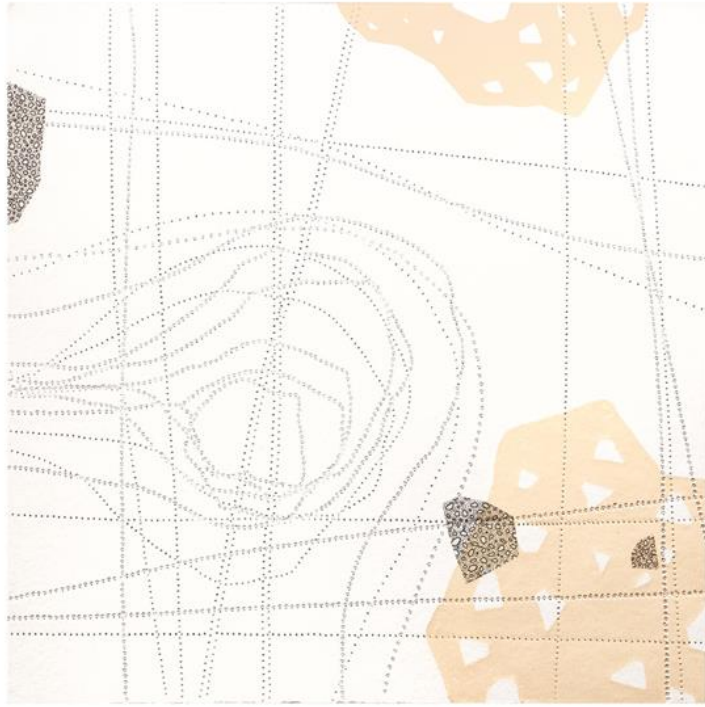
Remnants

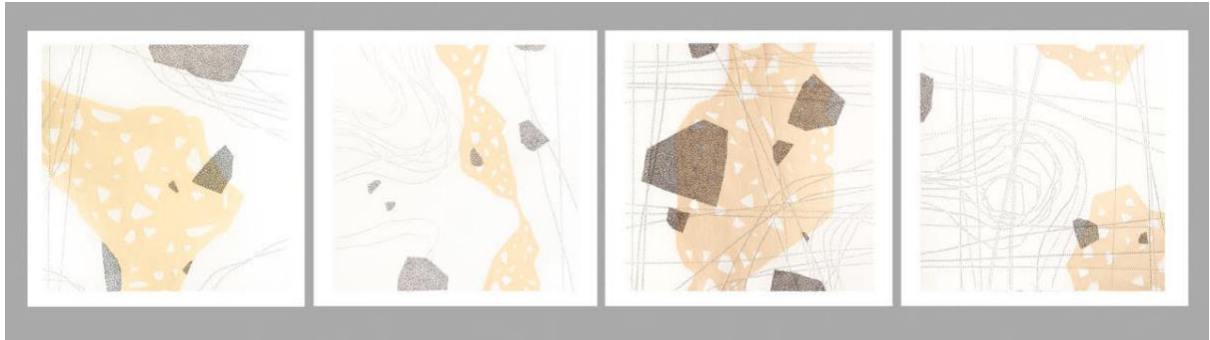
Acrylic on canvas

12 x 36 inches each of five pieces, total size 60 x 30 inches

2018







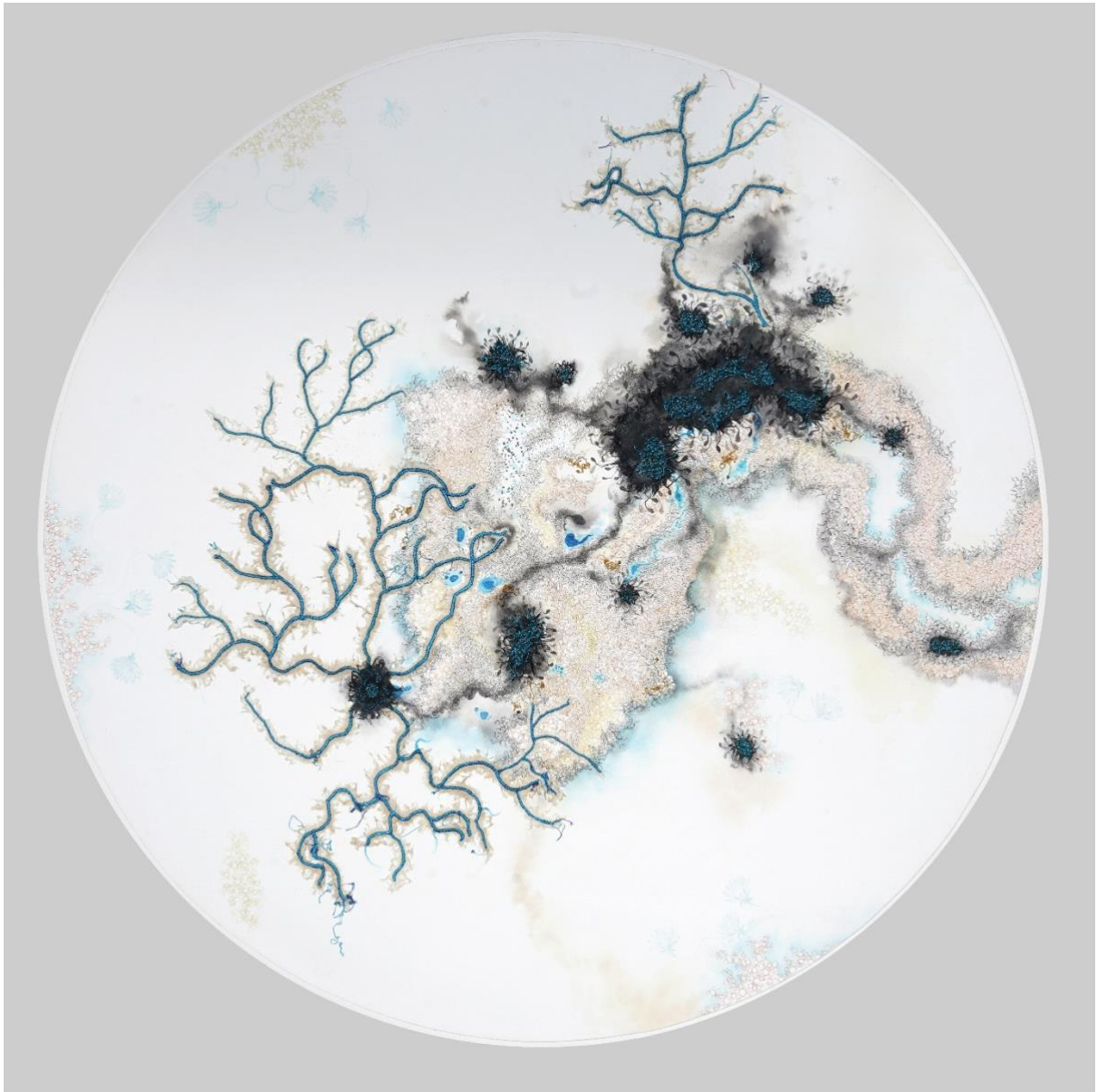
Chronicles of the Earth – 1, 2, 3 and 4
Acrylic with transfers on Hahnemuhle paper
Mixed Media
10 x 10 inches

GOPA TRIVEDI

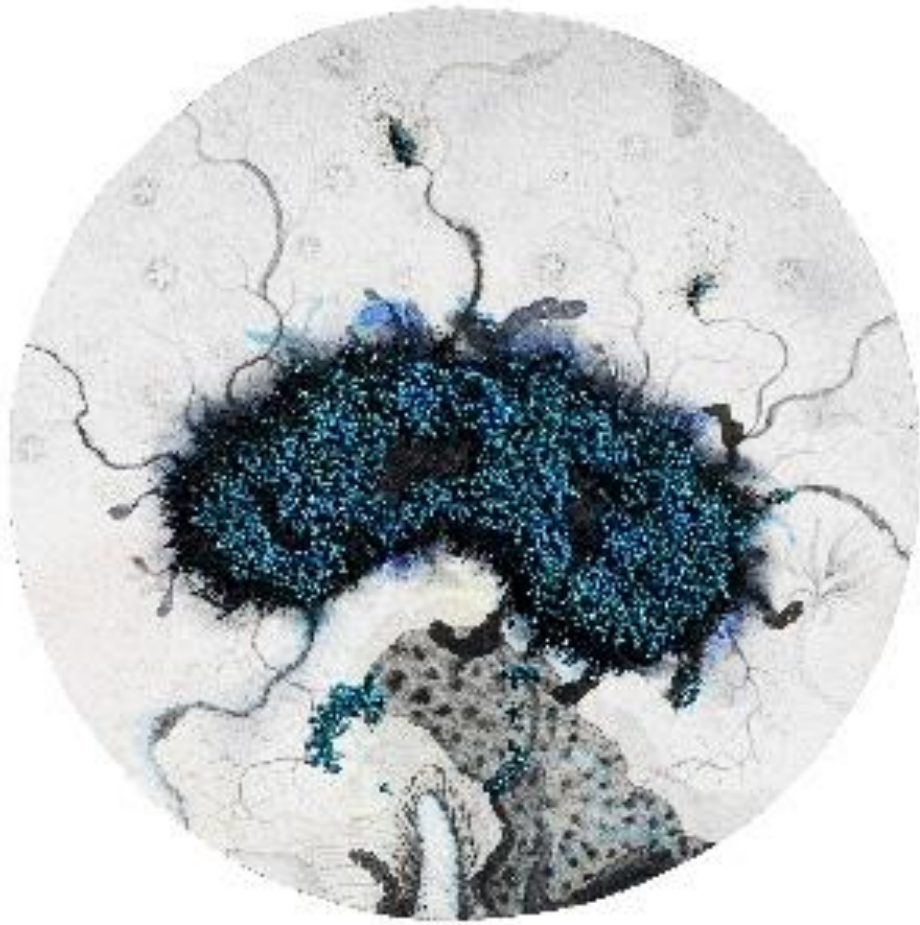


Untitled
61.5 x 34 inches
Gouache on Wasli
2021

PRANATI PANDA



Growing within
26.5 inches Diameter
2021
Mix media and water colour on paper



Growing Within I
12 inches Diameter
2021
Mix media and water colour on paper



The Transcendence of Quite Moments
29 inches Diameter
2020
Mix media and water colour on paper

ABOUT LATITUDE 28

Since its inception in 2010, LATITUDE 28 has been promoting creative dialogue and presenting dynamic exhibitions that focus on contemporary art from South Asia. Founded by art historian Bhavna Kakar, LATITUDE 28 has become synonymous with cutting edge art from the region, seeking fresh perspectives and innovative thinking in its attempt to stimulate interest in new waves of art making and provides a horizontal environment where artists are encouraged to contextualize and experiment with medium and material, positioning them within historical and contemporary frameworks that critically respond to the canon. When making programmatic decisions, LATITUDE 28 seeks to promote diversity through building a community and culture that is inclusive of all groups and individuals. Keeping with its wider role as an institution dedicated to the arts, LATITUDE 28 has paved the way for active collaborations between artists from Iran, Pakistan, Nepal, Sri Lanka and India through its curated shows and outreach events. The gallery, thus, continues to work towards making art accessible and inclusive to larger audiences and our patrons, with exhibitions strategically located at the nexus where artists, their work, art institutions, collectors and many different publics intersect.

For more information, please contact **LATITUDE 28** at:

Website: <http://www.latitude28.com>

Email: latitude28@gmail.com

Tel: +91 11 46791111

Address: F - 208, First Floor, Lado Sarai, New Delhi - 110030